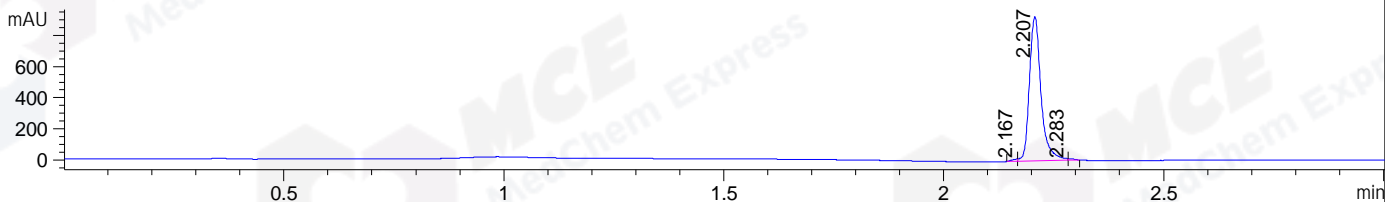
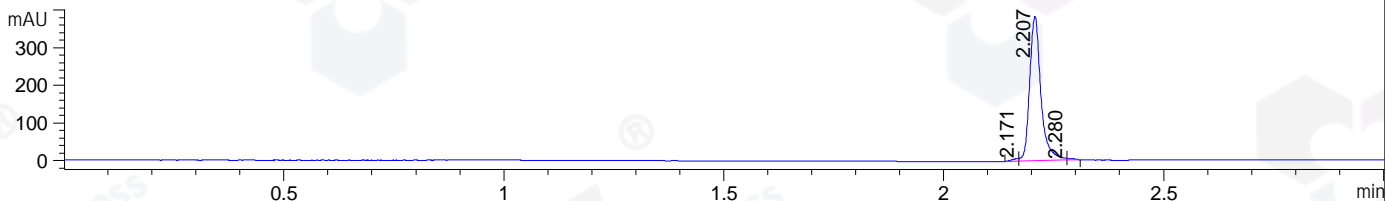


File ..1\DATA\2019\20190329\558\BIZ2019-328-CXL4.D Tgt Mass (CHM):
 Injection Date : 29 Mar 19 10:39 am +0800 Seq. Line : 19
 Sample Name : BIZ2019-328-CXL4 Location : P1-D-01
 Acq. Operator : LQ_1052 Inj : 1
 Spec. Reported : MS Integration Inj Volume : 1 ul
 Acq. Method : D:\Chem32\1\data\2019\20190329\558\1-POS-3MIN-1.M
 Analysis Method : D:\CHEM32\1\DATA\2019\20190329\558\1-POS-3MIN-1.M
 Catalog No : HY-118628 Batch#39708
 Method Info : Mobile Phase: A: water(0.01%TFA) B:ACN(0.01%TFA)
 Gradient: 5% to 95%B within 1.3 min
 Flow Rate :1.8ml/min
 Column :SunFire C18, 4.6*50mm,3.5um A-RP-314
 Oven Temperature : 45

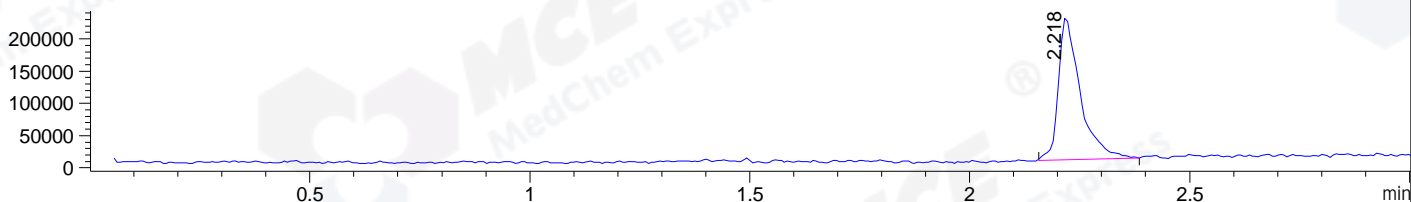
DAD1 B, Sig=214,4 Ref=off



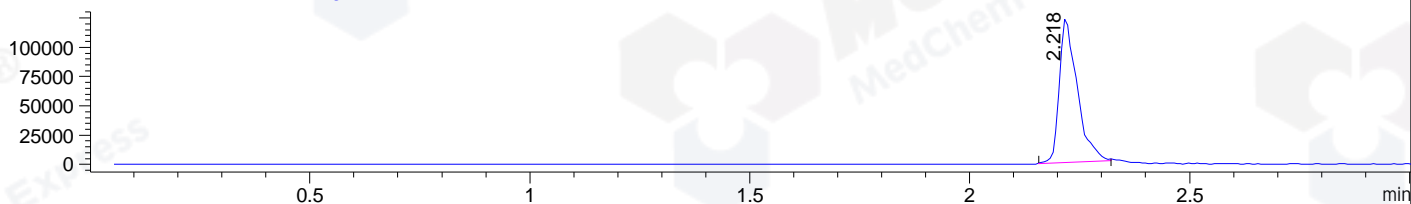
DAD1 C, Sig=254,4 Ref=off



MSD1 TIC, MS File ES-API, Pos, Scan, Frag: 70



Ion 338.2, MSD1 338.2, Target Mass 337.2 +H Positive, EIC=337.9:338.9



Integration Results for DAD1 B, Sig=214,4 Ref=off

RetTim	Width	Area	Height	Area%	MS (+)
2.17	0.01	11.79	14.47	0.68	160
2.21	0.03	1705.74	928.26	98.81	338
2.28	0.01	8.71	10.33	0.50	338

Integration Results for DAD1 C, Sig=254,4 Ref=off

RetTim	Width	Area	Height	Area%	MS (+)
2.17	0.02	7.43	7.10	1.07	160
2.21	0.03	683.56	384.12	98.28	338
2.28	0.02	4.54	4.62	0.65	338

Integration Results for MSD1 TIC, MS File

RetTim	Width	Area	Height	Area%	MS (+)
2.22	0.05	759049.00	222291.55	100.00	338

Ret. Time: 2.22

<<<< POSITIVE SPECTRA >>>>

ES-API Positive

