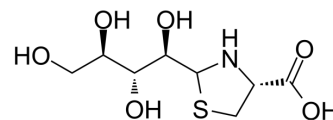


## D-Ribose-L-cysteine

Cat. No.:	HY-118642
CAS No.:	232617-15-1
Molecular Formula:	C <sub>8</sub> H <sub>15</sub> NO <sub>6</sub> S
Molecular Weight:	253.27
Target:	Cholinesterase (ChE); Reactive Oxygen Species
Pathway:	Neuronal Signaling; Immunology/Inflammation; Metabolic Enzyme/Protease; NF-κB
Storage:	Please store the product under the recommended conditions in the Certificate of Analysis.



### BIOLOGICAL ACTIVITY

#### Description

D-Ribose-L-cysteine is an orally active cysteine analog. D-Ribose-L-cysteine improves cellular antioxidant capacity by enhancing intracellular glutathione (GSH) biosynthesis. In addition, D-Ribose-L-cysteine has a memory-enhancing effect and can reverse Scopolamine (HY-N0296)-induced memory impairment by inhibiting oxidative stress and acetylcholinesterase (AChE) activity. D-Ribose-L-cysteine can be used in the study of neurodegenerative and cardiovascular diseases<sup>[1]</sup>.

### REFERENCES

[1]. Emokpae O, et al. D-ribose-L-cysteine enhances memory task, attenuates oxidative stress and acetylcholinesterase activity in scopolamine amnesic mice[J]. Drug Development Research, 2020, 81(5): 620-627.

**Caution: Product has not been fully validated for medical applications. For research use only.**

Tel: 609-228-6898

Fax: 609-228-5909

E-mail: tech@MedChemExpress.com

Address: 1 Deer Park Dr, Suite Q, Monmouth Junction, NJ 08852, USA