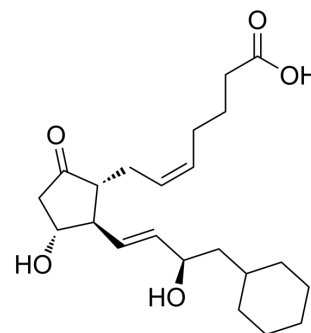


## 8-Iso-16-cyclohexyl-tetranor prostaglandin E2

Cat. No.:	HY-118681
CAS No.:	53319-30-5
Molecular Formula:	C <sub>22</sub> H <sub>34</sub> O <sub>5</sub>
Molecular Weight:	378.5
Target:	Others
Pathway:	Others
Storage:	Please store the product under the recommended conditions in the Certificate of Analysis.



### BIOLOGICAL ACTIVITY

#### Description

8-Iso-16-cyclohexyl-tetranor prostaglandin E2 is an analog of Prostaglandin E2 (HY-101952)<sup>[1]</sup>.

### REFERENCES

[1]. Zhang S, et al. Identify organic contaminants of high-concern based on non-targeted toxicity testing and non-targeted LC-HRMS analysis in tap water and source water along the Yangtze River. *Water Res.* 2024 Apr 1;253:121303.

**Caution: Product has not been fully validated for medical applications. For research use only.**

Tel: 609-228-6898

Fax: 609-228-5909

E-mail: tech@MedChemExpress.com

Address: 1 Deer Park Dr, Suite Q, Monmouth Junction, NJ 08852, USA