

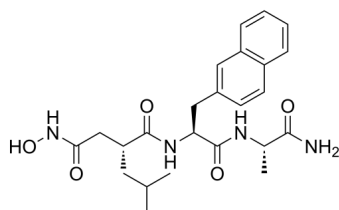
TAPI-0

Cat. No.: HY-118694
Batch No.: 285632
CAS No.: 163958-73-4
Molecular Formula: C₂₄H₃₂N₄O₅

ANALYTICAL DATA

Theoretical: C(-), H(-), N(-), Peptide Content(≥60.0%)
Result: C(60.74%), H(6.77%), N(11.58%), Peptide Content(94.40%)

Chemical Structure:



Caution: Product has not been fully validated for medical applications. For research use only.

Tel: 609-228-6898

Fax: 609-228-5909

E-mail: tech@MedChemExpress.com

Address: 1 Deer Park Dr, Suite Q, Monmouth Junction, NJ 08852, USA