

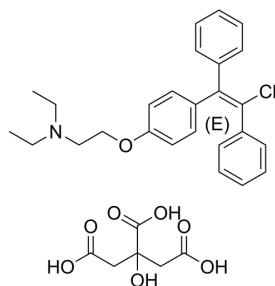
Enclomiphene (citrate)

| | |
|----------------|--|
| Cat. No.: | HY-118861A |
| CAS No.: | 7599-79-3 |
| Batch No.: | 263971 |
| Chemical Name: | Ethanamine, 2-[4-[(1E)-2-chloro-1,2-diphenylethenyl]phenoxy]-N,N-diethyl-, 2-hydroxy-1,2,3-propanetricarboxylate (1:1) |

PHYSICAL AND CHEMICAL PROPERTIES

| | |
|--------------------|--|
| Molecular Formula: | C ₃₂ H ₃₆ ClNO ₈ |
| Molecular Weight: | 598.08 |
| Storage: | 4°C, sealed storage, away from moisture and light * In solvent : -80°C, 6 months; -20°C, 1 month (sealed storage, away from moisture and light) |

Chemical Structure:



ANALYTICAL DATA

| | |
|------------------------------|---|
| Appearance: | White to off-white (Solid) |
| ¹ H NMR Spectrum: | Consistent with structure |
| LCMS: | Consistent with structure |
| Purity (LCMS): | 99.96% |
| Conclusion: | The product has been tested and complies with the given specifications. |

Caution: Product has not been fully validated for medical applications. For research use only.

Tel: 609-228-6898

Fax: 609-228-5909

E-mail: tech@MedChemExpress.com

Address: 1 Deer Park Dr, Suite Q, Monmouth Junction, NJ 08852, USA