

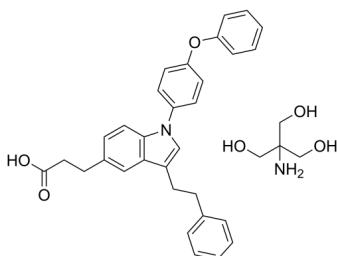
ASB14780

Cat. No.: HY-119019
Batch No.: 260169
CAS No.: 1069046-00-9
Molecular Formula: C₃₅H₃₈N₂O₆

ANALYTICAL DATA

Theoretical: C(72.14%), H(6.57%), N(4.81%)
Result: C(72.06%), H(6.39%), N(4.84%)

Chemical Structure:



Caution: Product has not been fully validated for medical applications. For research use only.

Tel: 609-228-6898

Fax: 609-228-5909

E-mail: tech@MedChemExpress.com

Address: 1 Deer Park Dr, Suite Q, Monmouth Junction, NJ 08852, USA