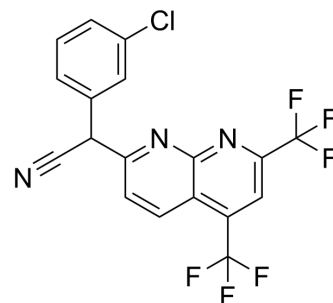


## AMDE-1

<b>Cat. No.:</b>	HY-119137		
<b>CAS No.:</b>	478043-30-0		
<b>Molecular Formula:</b>	C <sub>18</sub> H <sub>8</sub> ClF <sub>6</sub> N <sub>3</sub>		
<b>Molecular Weight:</b>	415.72		
<b>Target:</b>	Autophagy; AMPK		
<b>Pathway:</b>	Autophagy; Epigenetics; PI3K/Akt/mTOR		
<b>Storage:</b>	Powder	-20°C	3 years
		4°C	2 years
	In solvent	-80°C	6 months
		-20°C	1 month



## SOLVENT & SOLUBILITY

### In Vitro

DMSO : 100 mg/mL (240.55 mM; Need ultrasonic)

Concentration	Solvent	Mass		
		1 mg	5 mg	10 mg
Preparing Stock Solutions	1 mM	2.4055 mL	12.0273 mL	24.0547 mL
	5 mM	0.4811 mL	2.4055 mL	4.8109 mL
	10 mM	0.2405 mL	1.2027 mL	2.4055 mL

Please refer to the solubility information to select the appropriate solvent.

### In Vivo

- Add each solvent one by one: 10% DMSO >> 90% corn oil  
Solubility: 2.5 mg/mL (6.01 mM); Clear solution; Need ultrasonic and warming and heat to 60°C

## BIOLOGICAL ACTIVITY

### Description

AMDE-1 is a potent autophagy inducer. AMDE-1 induces autophagy by the AMPK-mTORC1-ULK1 pathway and at the same time inhibited autophagy-mediated degradation by causing lysosome dysfunction. AMDE-1 can be used in research of cancer<sup>[1]</sup>.

## REFERENCES

- [1]. Li M, et, al. AMDE-1 is a dual function chemical for autophagy activation and inhibition. PLoS One. 2015 Apr 20;10(3):e0122083.

---

**Caution: Product has not been fully validated for medical applications. For research use only.**

Tel: 609-228-6898

Fax: 609-228-5909

E-mail: [tech@MedChemExpress.com](mailto:tech@MedChemExpress.com)

Address: 1 Deer Park Dr, Suite Q, Monmouth Junction, NJ 08852, USA