

## CMX-2043

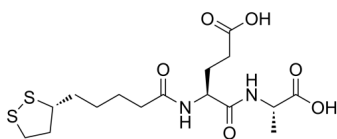
---

Cat. No.: HY-119152  
Batch No.: 251536  
CAS No.: 910627-26-8  
Molecular Formula: C<sub>16</sub>H<sub>26</sub>N<sub>2</sub>O<sub>6</sub>S<sub>2</sub>

### ANALYTICAL DATA

Theoretical: C(-), H(-), N(-), Peptide Content(≥60.0%)  
Result: C(46.17%), H(6.10%), N(6.86%), Peptide Content(99.60%)

Chemical Structure:



**Caution: Product has not been fully validated for medical applications. For research use only.**

Tel: 609-228-6898

Fax: 609-228-5909

E-mail: [tech@MedChemExpress.com](mailto:tech@MedChemExpress.com)

Address: 1 Deer Park Dr, Suite Q, Monmouth Junction, NJ 08852, USA