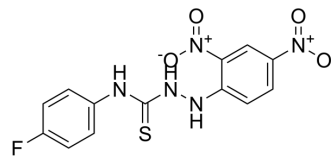


Kobe2601

Cat. No.:	HY-119230
CAS No.:	316151-68-5
Molecular Formula:	C ₁₃ H ₁₀ FN ₅ O ₄ S
Molecular Weight:	351.31
Target:	Others
Pathway:	Others
Storage:	4°C, sealed storage, away from moisture and light * In solvent : -80°C, 6 months; -20°C, 1 month (sealed storage, away from moisture and light)



SOLVENT & SOLUBILITY

In Vitro

DMSO : 125 mg/mL (355.81 mM; Need ultrasonic)

Concentration	Mass		
	1 mg	5 mg	10 mg
1 mM	2.8465 mL	14.2324 mL	28.4649 mL
5 mM	0.5693 mL	2.8465 mL	5.6930 mL
10 mM	0.2846 mL	1.4232 mL	2.8465 mL

Please refer to the solubility information to select the appropriate solvent.

BIOLOGICAL ACTIVITY

Description

Kobe2601 is a Kobe0065 (HY-15716) analogue. Kobe2601 can be used to probe the Kobe family of compounds' mechanism of action^[1].

REFERENCES

[1]. Shima F, et al. In silico discovery of small-molecule Ras inhibitors that display antitumor activity by blocking the Ras-effector interaction. Proc Natl Acad Sci U S A. 2013 May 14;110(20):8182-7.

Caution: Product has not been fully validated for medical applications. For research use only.

Tel: 609-228-6898

Fax: 609-228-5909

E-mail: tech@MedChemExpress.com

Address: 1 Deer Park Dr, Suite Q, Monmouth Junction, NJ 08852, USA