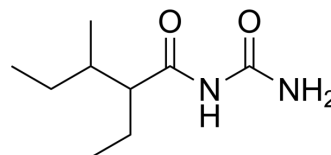


Capuride

Cat. No.:	HY-119461
CAS No.:	5579-13-5
Molecular Formula:	C ₉ H ₁₈ N ₂ O ₂
Molecular Weight:	186.25
Target:	Others
Pathway:	Others
Storage:	Please store the product under the recommended conditions in the Certificate of Analysis.



BIOLOGICAL ACTIVITY

Description	Capuride is an orally active sedative agent. Capuride has anticonvulsant activity ^[1] .								
In Vivo	<p>Capuride (VPA, 38-107 mg/kg p.o.) shows anticonvulsant activity in MES and scMet induced seizures rats^[2].</p> <p>Capuride (p.o., rats) shows neurotoxicity with an ED₅₀ of 232 mg/kg^[2].</p> <p>Capuride (49-71 mg/kg, i.p.) shows anticonvulsant activity in 6 Hz Psychomotor seizure mice^[2].</p> <p>MCE has not independently confirmed the accuracy of these methods. They are for reference only.</p> <table border="1"> <tr> <td>Animal Model:</td> <td>Electrically (MES) and chemically (scMet) induced seizures in rats^[2]</td> </tr> <tr> <td>Dosage:</td> <td>38-107 mg/kg</td> </tr> <tr> <td>Administration:</td> <td>Oral administration (p.o.)</td> </tr> <tr> <td>Result:</td> <td>ED₅₀: 54 mg/kg (MES model), 77 mg/kg (scMet model).</td> </tr> </table>	Animal Model:	Electrically (MES) and chemically (scMet) induced seizures in rats ^[2]	Dosage:	38-107 mg/kg	Administration:	Oral administration (p.o.)	Result:	ED ₅₀ : 54 mg/kg (MES model), 77 mg/kg (scMet model).
Animal Model:	Electrically (MES) and chemically (scMet) induced seizures in rats ^[2]								
Dosage:	38-107 mg/kg								
Administration:	Oral administration (p.o.)								
Result:	ED ₅₀ : 54 mg/kg (MES model), 77 mg/kg (scMet model).								

REFERENCES

- [1]. Goldstein L, et al. Quantitative EEG analysis of single-dose effect relationships in normal volunteers of Pacinox (capuride), a new antianxiety drug. *Biological psychiatry*, 1971, 3(2): 165-172.
- [2]. Jakob Avi Shimshoni, et al. Potent anticonvulsant urea derivatives of constitutional isomers of valproic acid. *J Med Chem*. 2007 Dec 13;50(25):6419-27.

Caution: Product has not been fully validated for medical applications. For research use only.

Tel: 609-228-6898

Fax: 609-228-5909

E-mail: tech@MedChemExpress.com

Address: 1 Deer Park Dr, Suite Q, Monmouth Junction, NJ 08852, USA