

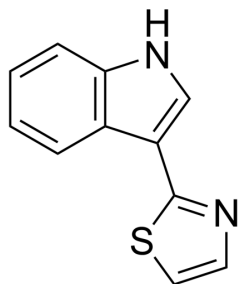
Camalexin

Cat. No.: HY-119502
CAS No.: 135531-86-1
Batch No.: 310601
Chemical Name: 1H-Indole, 3-(2-thiazolyl)-

PHYSICAL AND CHEMICAL PROPERTIES

Molecular Formula: C₁₁H₈N₂S
Molecular Weight: 200.26
Storage: Powder -20°C 3 years
 4°C 2 years
 In solvent -80°C 6 months
 -20°C 1 month

Chemical Structure:



ANALYTICAL DATA

Appearance: White to yellow (Solid)
¹H NMR Spectrum: Consistent with structure
LCMS: Consistent with structure
Purity (LCMS): 99.70%
Conclusion: The product has been tested and complies with the given specifications.

Caution: Product has not been fully validated for medical applications. For research use only.

Tel: 609-228-6898

Fax: 609-228-5909

E-mail: tech@MedChemExpress.com

Address: 1 Deer Park Dr, Suite Q, Monmouth Junction, NJ 08852, USA