

File ..ATA\2019\20190318\556\BIZ2019-315-WYQ26.D Tgt Mass (CHM):

Injection Date : 18 Mar 19 3:50 pm +0800 Seq. Line : 77

Sample Name : BIZ2019-315-WYQ26 Location : P1-C-05

Acq. Operator : LQ\_1052 Inj : 1

Spec. Reported : MS Integration Inj Volume : 2 ul

Acq. Method : D:\Chem32\1\data\2019\20190318\556\1-POS-3MIN-1.M

Analysis Method : D:\CHEM32\1\DATA\2019\20190318\556\1-POS-3MIN-1.M

Catalog No : HY-119602 Batch#39114

Method Info : Mobile Phase: A: water(0.01%TFA) B:ACN(0.01%TFA)

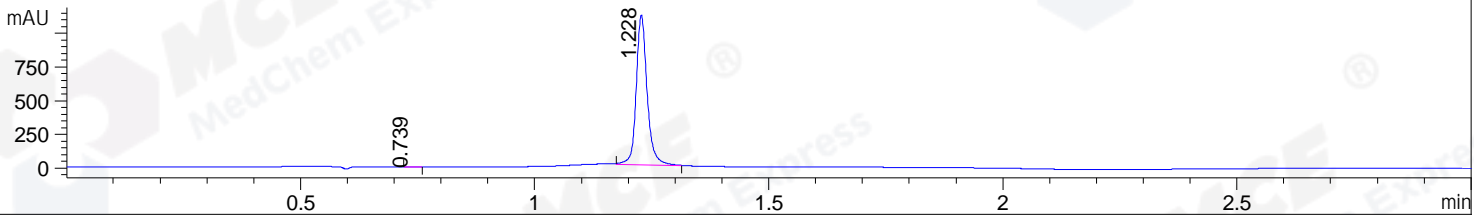
Gradient: 5% to 95%B within 1.3 min

Flow Rate :1.8ml/min

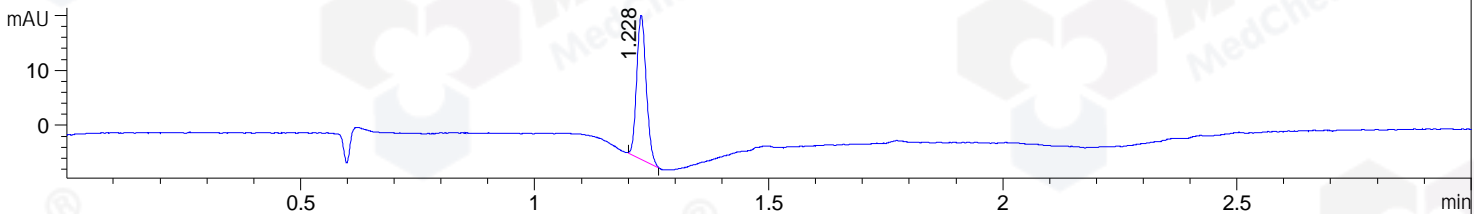
Column :SunFire C18, 4.6\*50mm,3.5um A-RP-314

Oven Temperature : 45

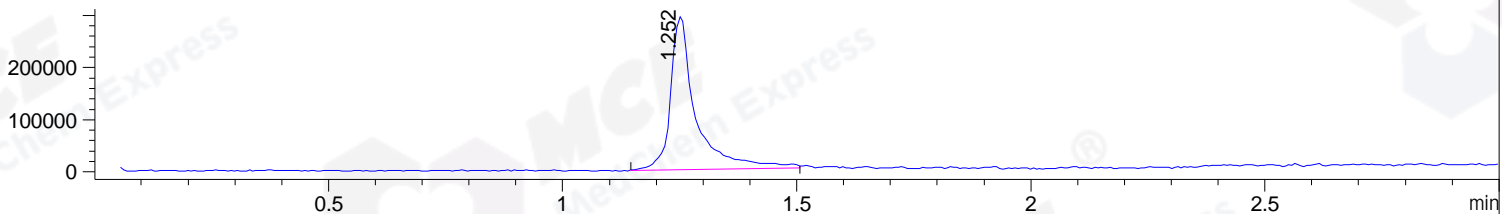
DAD1 B, Sig=214,4 Ref=off



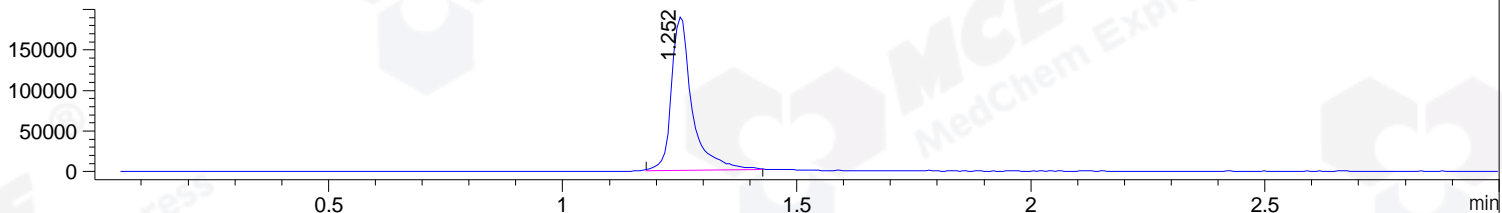
DAD1 C, Sig=254,4 Ref=off



MSD1 TIC, MS File ES-API, Pos, Scan, Frag: 70



Ion 140, MSD1 140, Target Mass 139 +H Positive, EIC=139.7:140.7



Integration Results for DAD1 B, Sig=214,4 Ref=off

RetTim	Width	Area	Height	Area%	MS (+)
0.74	0.02	2.24	1.79	0.12	ND
1.23	0.02	1805.49	1110.98	99.88	140

Integration Results for DAD1 C, Sig=254,4 Ref=off

RetTim	Width	Area	Height	Area%	MS (+)
1.23	0.02	37.23	26.21	100.00	140

Integration Results for MSD1 TIC, MS File

RetTim	Width	Area	Height	Area%	MS (+)
1.25	0.05	1113921.63	293923.16	100.00	140

Ret. Time: 1.25

<<<< POSITIVE SPECTRA >>>>

ES-API Positive

