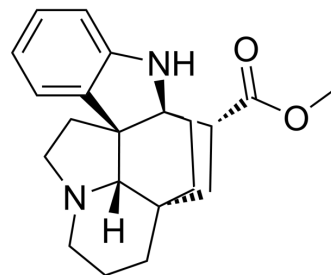


Kopsinine

Cat. No.:	HY-119642
CAS No.:	559-51-3
Molecular Formula:	C ₂₁ H ₂₆ N ₂ O ₂
Molecular Weight:	338.44
Target:	Others
Pathway:	Others
Storage:	Please store the product under the recommended conditions in the Certificate of Analysis.



BIOLOGICAL ACTIVITY

Description

Kopsinine is an indole alkaloid extracted from periwinkle flowers^[1].

REFERENCES

[1]. Adizov S M, et al. Crystal structure of indoline alkaloids kopsinilam, kopsinine, and the salts of the latter[J]. Journal of Structural Chemistry, 2016, 57: 1619-1626.

Caution: Product has not been fully validated for medical applications. For research use only.

Tel: 609-228-6898

Fax: 609-228-5909

E-mail: tech@MedChemExpress.com

Address: 1 Deer Park Dr, Suite Q, Monmouth Junction, NJ 08852, USA