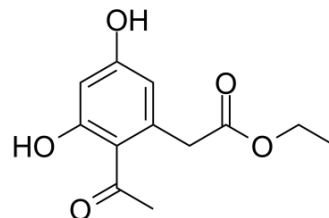


## Curvulin

<b>Cat. No.:</b>	HY-119692
<b>CAS No.:</b>	19054-27-4
<b>Molecular Formula:</b>	C <sub>12</sub> H <sub>14</sub> O <sub>5</sub>
<b>Molecular Weight:</b>	238.24
<b>Target:</b>	Microtubule/Tubulin
<b>Pathway:</b>	Cell Cycle/DNA Damage; Cytoskeleton
<b>Storage:</b>	Please store the product under the recommended conditions in the Certificate of Analysis.



### BIOLOGICAL ACTIVITY

#### Description

Curvulin, isolated from *Curvularia lunata*, is a phytotoxin<sup>[1]</sup>. Curvularin is reported to inhibit microtubule assembly and has also been shown to inhibit iNOS expression.

### REFERENCES

[1]. Ekaterina Poluektova, et al. Curvulin and Phaeosphaeride A From *Paraphoma* Sp. VIZR 1.46 Isolated From *Cirsium arvense* as Potential Herbicides. *Molecules*. 2018 Oct 28;23(11):2795.

**Caution: Product has not been fully validated for medical applications. For research use only.**

Tel: 609-228-6898

Fax: 609-228-5909

E-mail: tech@MedChemExpress.com

Address: 1 Deer Park Dr, Suite Q, Monmouth Junction, NJ 08852, USA