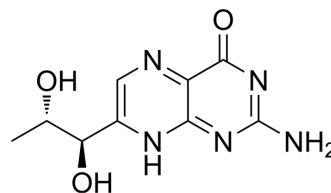


## L-Primapterin

Cat. No.:	HY-119712A
CAS No.:	2636-52-4
Molecular Formula:	C <sub>9</sub> H <sub>11</sub> N <sub>5</sub> O <sub>3</sub>
Molecular Weight:	237.22
Target:	Endogenous Metabolite
Pathway:	Metabolic Enzyme/Protease
Storage:	Please store the product under the recommended conditions in the Certificate of Analysis.



### BIOLOGICAL ACTIVITY

#### Description

L-Primapterin (7-Biopterin) is the 7-isomer of L-biopterin. L-Primapterin is a characteristic marker of hyperphenylalaninemia variant primapterinuria, which is excreted in the urine<sup>[1][2]</sup>.

### REFERENCES

[1]. Curtius HC, et al. Progress in the study of biosynthesis and role of 7-substituted pterins: function of pterin-4a-carbinolamine dehydratase. *Adv Exp Med Biol.* 1993;338:107-10.

[2]. Ayling JE, et al. Hyperphenylalaninemia and 7-pterin excretion associated with mutations in 4a-hydroxy-tetrahydrobiopterin dehydratase/DCoH: analysis of enzyme activity in intestinal biopsies. *Mol Genet Metab.* 2000 Jul;70(3):179-88.

**Caution: Product has not been fully validated for medical applications. For research use only.**

Tel: 609-228-6898

Fax: 609-228-5909

E-mail: tech@MedChemExpress.com

Address: 1 Deer Park Dr, Suite Q, Monmouth Junction, NJ 08852, USA