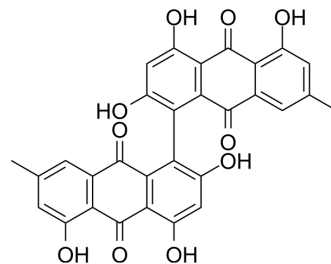


Skyrin

Cat. No.:	HY-119739
CAS No.:	602-06-2
Molecular Formula:	C ₃₀ H ₁₈ O ₁₀
Molecular Weight:	538.46
Target:	GCGR
Pathway:	GPCR/G Protein
Storage:	Please store the product under the recommended conditions in the Certificate of Analysis.



BIOLOGICAL ACTIVITY

Description

Skyrin is an anthraquinone compound that can be isolated from almond fruit. Skyrin is a receptor-selective glucagon antagonist. Skyrin can inhibit the growth of tumor cells^{[1][2]}.

REFERENCES

- [1]. Parker JC, et al. Effects of skyrin, a receptor-selective glucagon antagonist, in rat and human hepatocytes. *Diabetes*. 2000 Dec;49(12):2079-86.
- [2]. Lin LC, et al. Cytotoxic principles from *Ventilago leiocarpa*. *J Nat Prod*. 2001 May;64(5):674-6.

Caution: Product has not been fully validated for medical applications. For research use only.

Tel: 609-228-6898

Fax: 609-228-5909

E-mail: tech@MedChemExpress.com

Address: 1 Deer Park Dr, Suite Q, Monmouth Junction, NJ 08852, USA