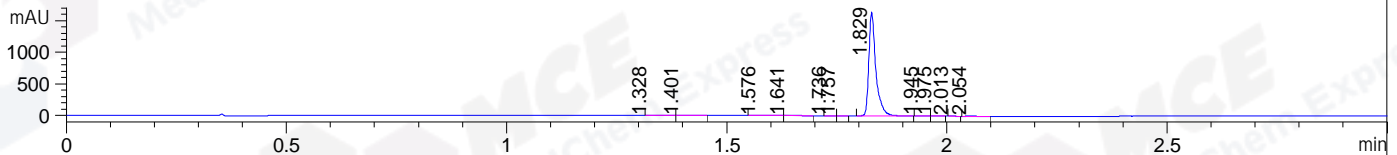
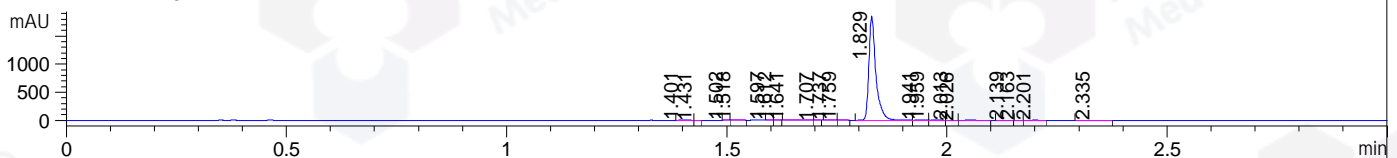


File ..MS03\Data\20190311\20190311\FXD6394-059-6.D Tgt Mass (CHM):
 Injection Date : 11 Mar 19 3:52 pm +0800 Seq. Line : 87
 Sample Name : FXD6394-059-6 Location : P2-B-04
 Acq. Operator : SYSTEM Inj : 1
 Spec. Reported : MS Integration Inj Volume : 1 ul
 Acq. Method : D:\LCMS03\Data\20190311\20190311\1-POS-3MIN.M
 Analysis Method : D:\LCMS03\Data\20190311\20190311\1-POS-3MIN.M
 Catalog No : HY-119940 Batch#38823
 Method Info : Mobile Phase: A: water(0.01%TFA) B:ACN(0.01%TFA)
 Gradient: 5% to 95%B within 1.3 min
 Flow Rate :1.8ml/min
 Column :SunFire C18, 4.6*50mm,3.5um A-RP-392
 Oven Temperature : 45C

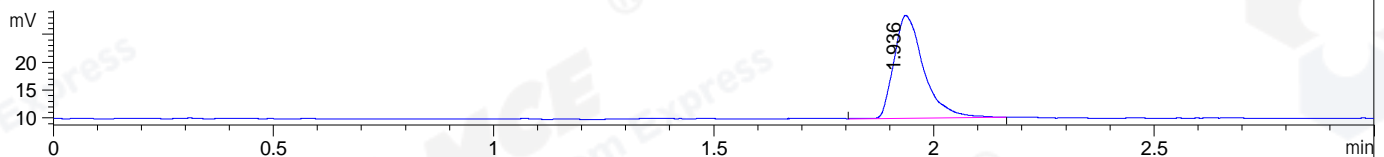
DAD1 A, Sig=214,4 Ref=off



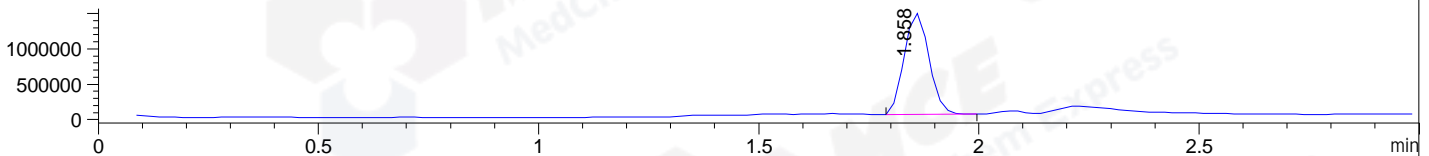
DAD1 B, Sig=254,4 Ref=off



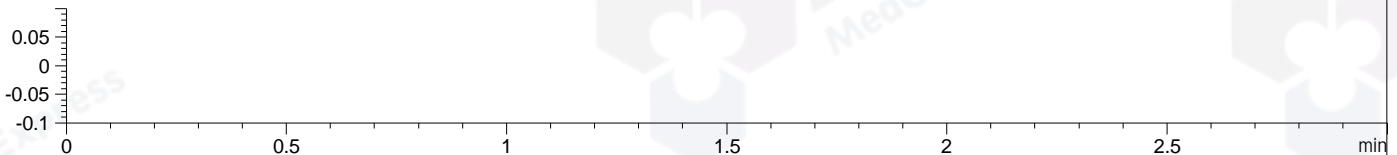
ELS1 A, ELSD Signal



MSD1 TIC, MS File ES-API, Pos, Scan, Frag: 70



Ion 1, MSD1 1, Target Mass 0 +H Positive, EIC=0.7:1.7



Integration Results for DAD1 A, Sig=214,4 Ref=off

RetTim	Width	Area	Height	Area%	MS (+)
1.33	0.02	2.23	1.52	0.12	114
1.40	0.02	4.09	3.72	0.22	114
1.58	0.03	4.63	2.34	0.25	114
1.64	0.02	1.34	1.21	0.07	114
1.74	0.01	0.71	1.01	0.04	114
1.76	0.01	0.60	0.68	0.03	114
1.83	0.02	1812.72	1630.52	98.47	359
1.95	0.02	2.75	2.56	0.15	359
1.98	0.01	2.48	2.81	0.13	114
2.01	0.02	0.77	0.84	0.04	114
2.05	0.02	8.62	7.30	0.47	399

Integration Results for DAD1 B, Sig=254,4 Ref=off

RetTim	Width	Area	Height	Area%	MS (+)
1.40	0.01	3.28	3.52	0.16	114
1.43	0.01	0.07	0.13	0.00	114
1.50	0.01	0.16	0.25	0.01	114

1.52	0.01	0.39	0.46	0.02	114
1.60	0.01	0.27	0.52	0.01	114
1.61	0.01	0.16	0.26	0.01	114
1.64	0.02	1.60	1.51	0.08	114
1.71	0.01	0.04	0.08	0.00	114
1.74	0.01	0.82	1.05	0.04	114
1.76	0.01	0.25	0.31	0.01	114
1.83	0.02	2050.09	1857.84	98.79	359
1.94	0.02	4.51	3.32	0.22	359
1.96	0.02	3.67	1.14	0.18	114
2.01	0.02	0.89	0.68	0.04	114
2.03	0.02	5.63	0.23	0.27	399
2.14	0.02	0.79	0.68	0.04	114
2.16	0.01	0.21	0.32	0.01	114
2.20	0.02	1.44	1.07	0.07	445
2.34	0.03	0.87	0.43	0.04	105

Integration Results for ELS1 A, ELSD Signal

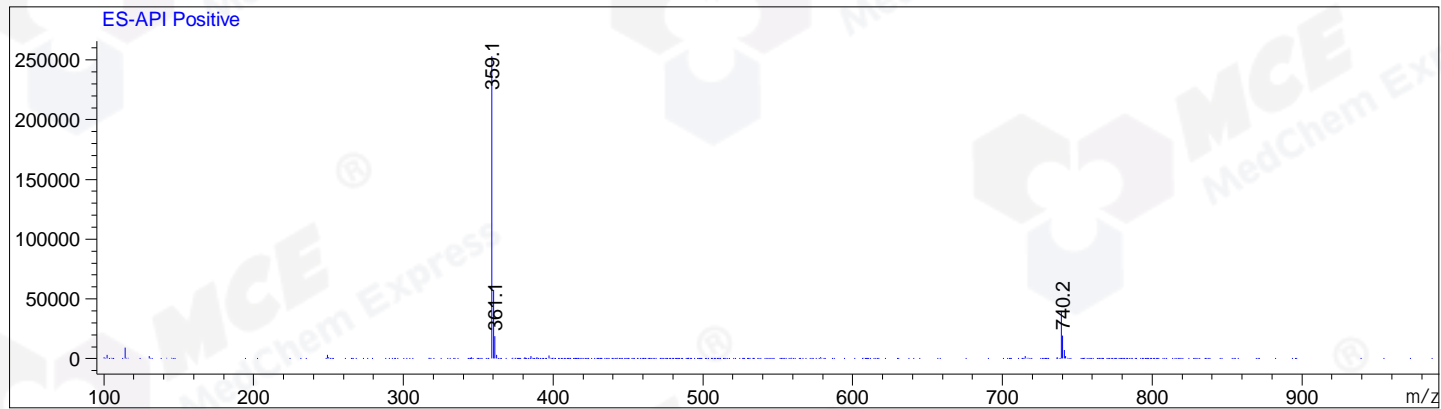
RetTim	Width	Area	Height	Area%	MS (+)
1.94	0.07	86.54	18.41	100.00	359

Integration Results for MSD1 TIC, MS File

RetTim	Width	Area	Height	Area%	MS (+)
1.86	0.06	5644248.00	1430876.00	100.00	359

Ret. Time: 1.86

<<<< POSITIVE SPECTRA >>>>



*** End of Report ***