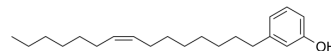


Cardanol monoene

Cat. No.:	HY-119979
CAS No.:	501-26-8
Molecular Formula:	C ₂₁ H ₃₄ O
Molecular Weight:	302.49
Target:	Apoptosis
Pathway:	Apoptosis
Storage:	Please store the product under the recommended conditions in the Certificate of Analysis.



BIOLOGICAL ACTIVITY

Description

Cardanol monoene (Cardanol C15:1) is a phenolic compound which can be found in cashew nut shell liquid. Cardanol monoene can induce mitochondria-associated apoptosis in human melanoma cells^[1].

REFERENCES

[1]. Su WC, et, al. Mitochondria-Associated Apoptosis in Human Melanoma Cells Induced by Cardanol Monoene from Cashew Nut Shell Liquid. J Agric Food Chem. 2017 Jul 19;65(28):5620-5631.

Caution: Product has not been fully validated for medical applications. For research use only.

Tel: 609-228-6898

Fax: 609-228-5909

E-mail: tech@MedChemExpress.com

Address: 1 Deer Park Dr, Suite Q, Monmouth Junction, NJ 08852, USA