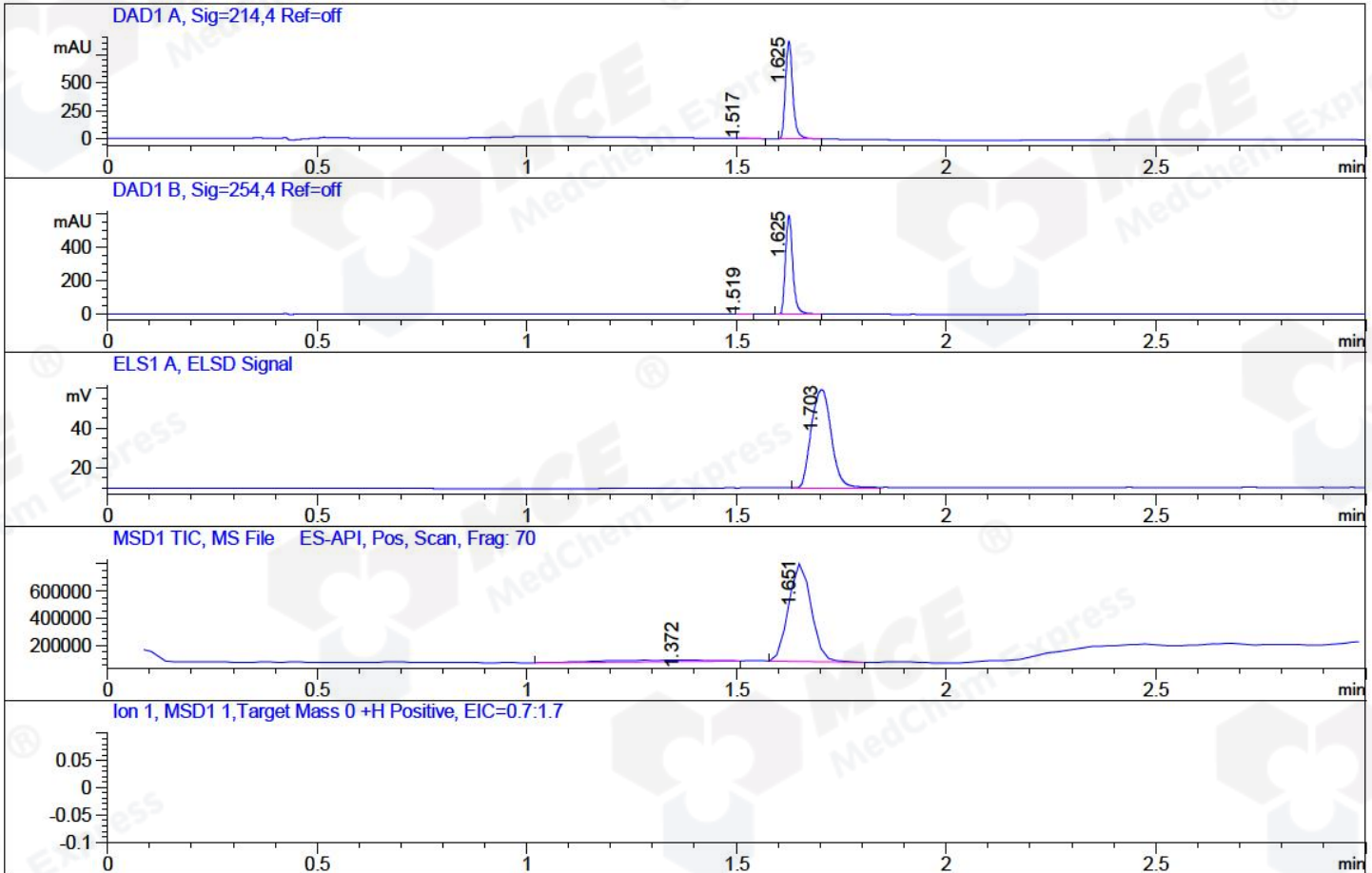


File ..8\20180807\20180807-1 4\CPK2018-807-18826.D Tgt Mass (CHM):
Injection Date : 7 Aug 18 11:18 am +0800 Seq. Line : 4
Sample Name : CPK2018-807-18826 Location : P1-C-08
Acq. Operator : SYSTEM Inj : 1
Spec. Reported : MS Integration Inj Volume : 1 ul
Acq. Method : D:\LCMS03\Data\2018\20180807\20180807-1 4\1-POS-3MIN.M
Analysis Method : D:\LCMS03\Data\2018\20180807\20180807-1 4\1-POS-3MIN.M
Catalog No : HY-12000 Batch#18826
Method Info : Mobile Phase: A: water(0.01%TFA) B:ACN(0.01%TFA)
Gradient: 5% to 95%B within 1.3 min
Flow Rate :1.8ml/min
Column :SunFire C18, 4.6*50mm,3.5um A-RP-186
Oven Temperature : 45C



Integration Results for DAD1 A, Sig=214,4 Ref=off

RetTim	Width	Area	Height	Area%	MS (+)
1.52	0.02	1.74	1.11	0.16	315
1.63	0.02	1050.69	867.44	99.84	295

Integration Results for DAD1 B, Sig=254,4 Ref=off

RetTim	Width	Area	Height	Area%	MS (+)
1.52	0.02	1.06	0.94	0.15	315
1.63	0.02	715.73	590.31	99.85	295

Integration Results for ELS1 A, ELSD Signal

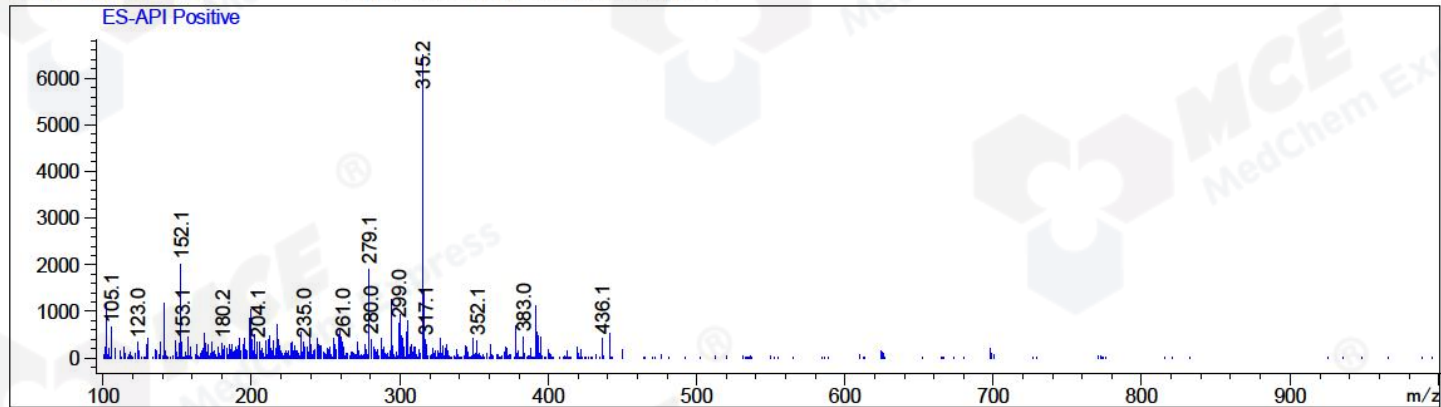
RetTim	Width	Area	Height	Area%	MS (+)
1.70	0.05	163.51	49.45	100.00	295

Integration Results for MSD1 TIC, MS File

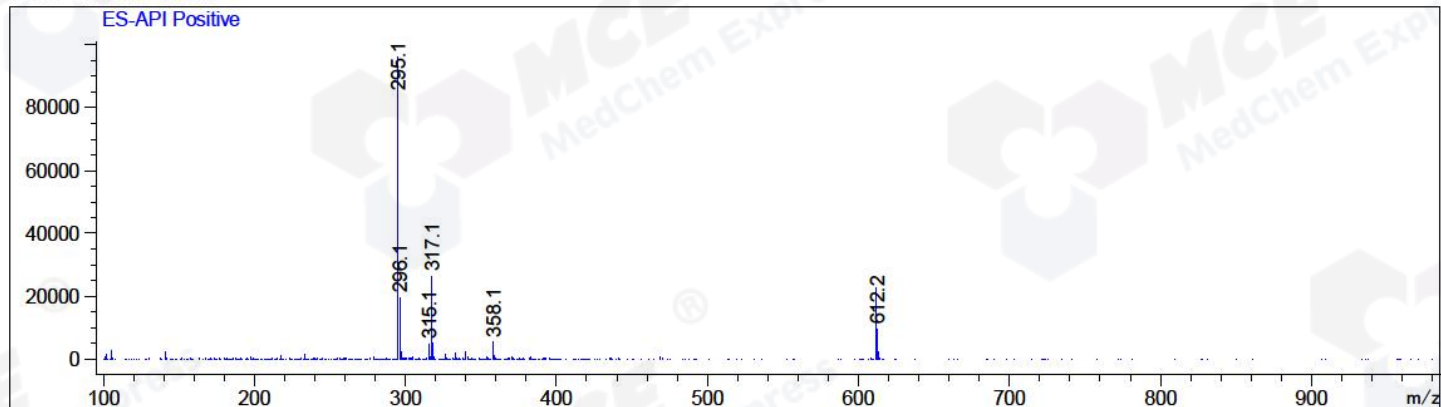
1.37	0.23	205476.63	11602.95	7.02	315
1.65	0.06	2723231.00	724373.69	92.98	295

RetTim	Width	Area	Height	Area%	MS (+)
-----	-----	-----	-----	-----	-----

Ret. Time: 1.37 <<<< POSITIVE SPECTRA >>>>



Ret. Time: 1.65



*** End of Report ***