

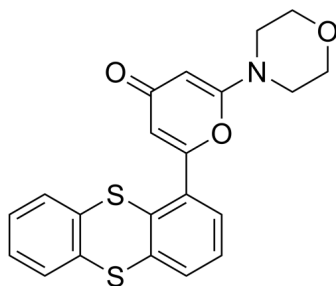
KU-55933

Cat. No.: HY-12016
Batch No.: 16872
CAS No.: 587871-26-9
Molecular Formula: C₂₁H₁₇NO₃S₂

ANALYTICAL DATA

Theoretical: C(59.7%)、H(4.77%)、N(3.32%)
Result: C(59.51%)、H(4.81%)、N(3.15%)

Chemical Structure:



Caution: Product has not been fully validated for medical applications. For research use only.

Tel: 609-228-6898

Fax: 609-228-5909

E-mail: tech@MedChemExpress.com

Address: 1 Deer Park Dr, Suite Q, Monmouth Junction, NJ 08852, USA