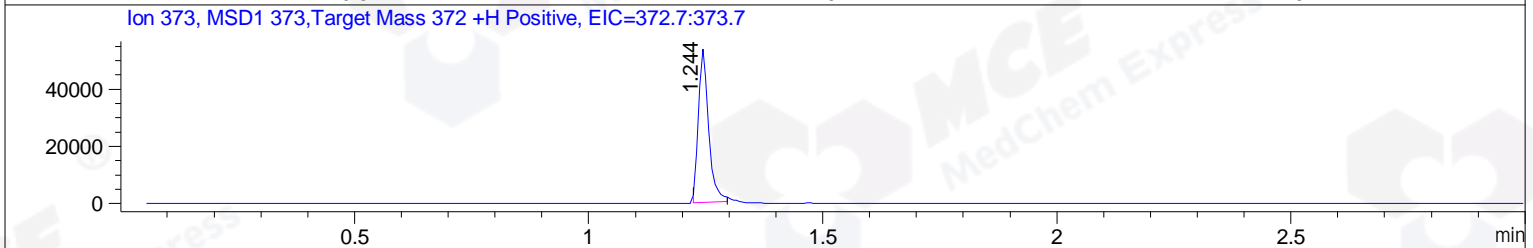
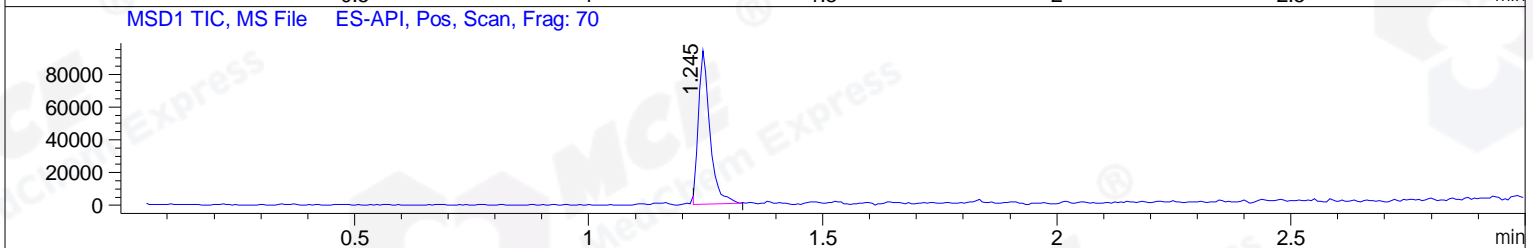
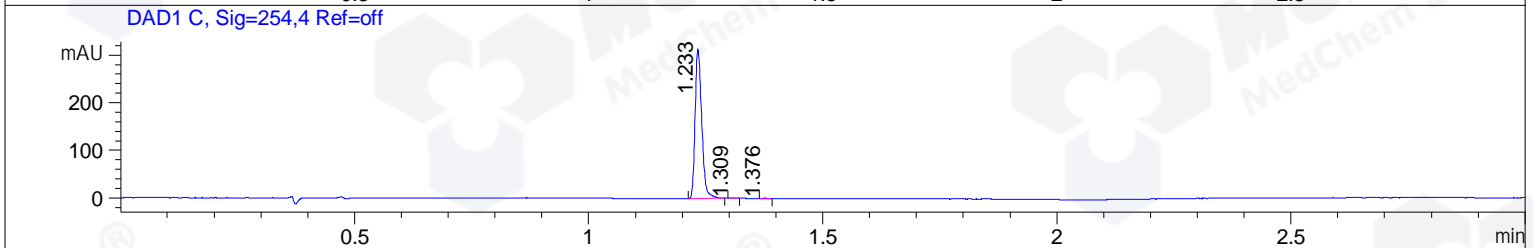
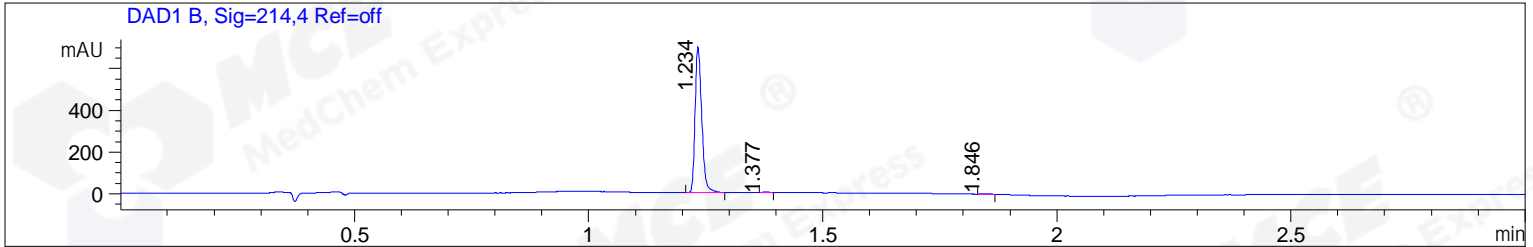


File ..DATA\2019\20191114\759\CPK2019-N14-06651-.D Tgt Mass (CHM):  
 Injection Date : 14 Nov 19 4:05 pm +0800 Seq. Line : 85  
 Sample Name : CPK2019-N14-06651 Location : P1-C-07  
 Acq. Operator : ZJ\_1432 Inj : 1  
 Spec. Reported : MS Integration Inj Volume : 2 ul  
 Acq. Method : D:\Chem32\1\data\2019\20191114\759\1-POS-3MIN.M  
 Analysis Method : D:\CHEM32\1\DATA\2019\20191114\759\1-POS-3MIN.M  
 Catalog No : HY-12017 Batch#06651  
 Method Info : Mobile Phase: A: water(0.01%TFA) B:ACN(0.01%TFA)  
 Gradient: 5% to 95%B within 1.3 min  
 Flow Rate :1.8ml/min  
 Column :SunFire C18, 4.6\*50mm,3.5um A-RP-433  
 Oven Temperature : 45



Integration Results for DAD1 B, Sig=214,4 Ref=off

RetTim	Width	Area	Height	Area%	MS (+)
1.23	0.02	691.59	698.22	98.97	373
1.38	0.01	3.22	3.75	0.46	ND
1.85	0.02	4.00	3.03	0.57	ND

Integration Results for DAD1 C, Sig=254,4 Ref=off

RetTim	Width	Area	Height	Area%	MS (+)
1.23	0.02	310.43	313.91	99.64	373
1.31	0.01	0.43	0.48	0.14	373
1.38	0.02	0.67	0.71	0.22	ND

Integration Results for MSD1 TIC, MS File

RetTim	Width	Area	Height	Area%	MS (+)
1.24	0.03	160928.50	93944.16	100.00	373

Ret. Time: 1.24

<<<< POSITIVE SPECTRA >>>>

ES-API Positive

