

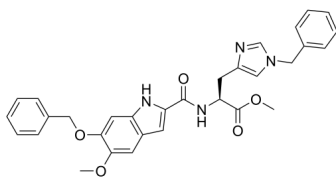
BMS-466442

Cat. No.: HY-120170
Batch No.: 364028
CAS No.: 1598424-76-0
Molecular Formula: C₃₁H₃₀N₄O₅

ANALYTICAL DATA

Theoretical: C(68.56%)、H(5.66%)、N(10.32%)
Result: C(68.43%)、H(5.57%)、N(10.34%)

Chemical Structure:



Caution: Product has not been fully validated for medical applications. For research use only.

Tel: 609-228-6898

Fax: 609-228-5909

E-mail: tech@MedChemExpress.com

Address: 1 Deer Park Dr, Suite Q, Monmouth Junction, NJ 08852, USA