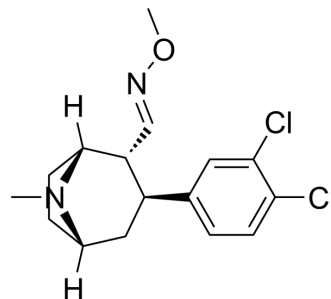


Brasofensine

| | |
|--------------------|---|
| Cat. No.: | HY-120206 |
| CAS No.: | 171655-91-7 |
| Molecular Formula: | C ₁₆ H ₂₀ Cl ₂ N ₂ O |
| Molecular Weight: | 327.25 |
| Target: | Monoamine Oxidase |
| Pathway: | Neuronal Signaling |
| Storage: | Please store the product under the recommended conditions in the Certificate of Analysis. |



BIOLOGICAL ACTIVITY

Description

Brasofensine (BMS-204756) is an oral active dopamine transporter antagonist and can be used for parkinson's disease research^[1].

REFERENCES

[1]. rackiewicz, E. J., et al. Brasofensine Treatment for Parkinson's Disease in Combination with Levodopa/Carbidopa. *Annals of Pharmacotherapy*, 36(2), 225–230.

Caution: Product has not been fully validated for medical applications. For research use only.

Tel: 609-228-6898

Fax: 609-228-5909

E-mail: tech@MedChemExpress.com

Address: 1 Deer Park Dr, Suite Q, Monmouth Junction, NJ 08852, USA