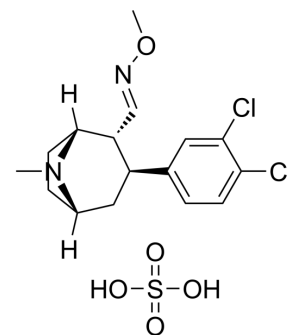


Brasofensine sulfate

Cat. No.:	HY-120206B
CAS No.:	171655-92-8
Molecular Formula:	C ₁₆ H ₂₂ Cl ₂ N ₂ O ₅ S
Molecular Weight:	425.33
Target:	Monoamine Oxidase
Pathway:	Neuronal Signaling
Storage:	Please store the product under the recommended conditions in the Certificate of Analysis.



BIOLOGICAL ACTIVITY

Description	Brasofensine (BMS-204756) sulfate is a dopamine transporter antagonist and can be used for parkinson's disease research ^[1]
IC ₅₀ & Target	IC50:Dopamine transporter ^[1]

REFERENCES

[1]. Frackiewicz, E. J, et al. Brasofensine Treatment for Parkinson's Disease in Combination with Levodopa/Carbidopa. Annals of Pharmacotherapy, 36(2), 225-230.

Caution: Product has not been fully validated for medical applications. For research use only.

Tel: 609-228-6898

Fax: 609-228-5909

E-mail: tech@MedChemExpress.com

Address: 1 Deer Park Dr, Suite Q, Monmouth Junction, NJ 08852, USA