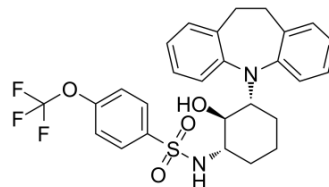


## SMAP-2

Cat. No.:	HY-120272
CAS No.:	1809068-70-9
Molecular Formula:	C <sub>27</sub> H <sub>27</sub> F <sub>3</sub> N <sub>2</sub> O <sub>4</sub> S
Molecular Weight:	532.57
Target:	Phosphatase
Pathway:	Metabolic Enzyme/Protease
Storage:	Please store the product under the recommended conditions in the COA.



### BIOLOGICAL ACTIVITY

Description	SMAP-2 (DT-1154) is an orally bioavailable <b>phosphatase 2A (PP2A)</b> activator which binds to the PP2A A $\alpha$ scaffold subunit to drive conformational changes in PP2A. SMAP-2 (DT-1154) inhibits the growth of KRAS-mutant lung cancers [1].
IC <sub>50</sub> & Target	PP2A <sup>[1]</sup>

### REFERENCES

[1]. Sangodkar J, et al. Activation of tumor suppressor protein PP2A inhibits KRAS-driven tumor growth. *J Clin Invest.* 2017 Jun 1;127(6):2081-2090.

**Caution: Product has not been fully validated for medical applications. For research use only.**

Tel: 609-228-6898

Fax: 609-228-5909

E-mail: tech@MedChemExpress.com

Address: 1 Deer Park Dr, Suite Q, Monmouth Junction, NJ 08852, USA