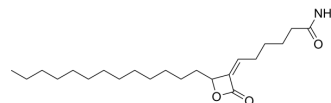


KC01

Cat. No.:	HY-120299
CAS No.:	1646795-59-6
Molecular Formula:	C ₂₂ H ₃₉ NO ₃
Molecular Weight:	365.55
Target:	Others
Pathway:	Others
Storage:	Please store the product under the recommended conditions in the Certificate of Analysis.



BIOLOGICAL ACTIVITY

Description	KC01 is an effective inhibitor of ABHD16A, with IC ₅₀ s of 90 nM for hABHD16A and 520 nM for mABHD16A. KC01 significantly reduces lyso-PSs, and decreases lyso-PS and LPS-induced cytokine production in mouse macrophages ^[1] .								
IC₅₀ & Target	90 nM for hABHD16A and 520 nM for mABHD16A ^[1]								
In Vitro	<p>KC01 (0-20 μM, 30 min) is a potent inhibitor of ABHD16A with an IC₅₀ < 90 nM^[1].</p> <p>KC01 (1 μM, 4 h) significantly reduces lyso-PSs in colon cancer cells (COL205, K562, and MCF7)^[1].</p> <p>KC01 (1 μM, 4 h) reduces lyso-PS and LPS-induced cytokine production in mouse macrophages^[1].</p> <p>MCE has not independently confirmed the accuracy of these methods. They are for reference only.</p> <p>Western Blot Analysis^[1]</p> <table border="1"> <tr> <td>Cell Line:</td> <td>HEK293T</td> </tr> <tr> <td>Concentration:</td> <td>0 μM, 0.1 μM, 0.2 μM, 0.5 μM, 1 μM, 2 μM, 5 μM, 10 μM, 20 μM</td> </tr> <tr> <td>Incubation Time:</td> <td>30 min</td> </tr> <tr> <td>Result:</td> <td>Showed KC01 inhibited ABHD16A in a concentration-dependent manner.</td> </tr> </table>	Cell Line:	HEK293T	Concentration:	0 μM, 0.1 μM, 0.2 μM, 0.5 μM, 1 μM, 2 μM, 5 μM, 10 μM, 20 μM	Incubation Time:	30 min	Result:	Showed KC01 inhibited ABHD16A in a concentration-dependent manner.
Cell Line:	HEK293T								
Concentration:	0 μM, 0.1 μM, 0.2 μM, 0.5 μM, 1 μM, 2 μM, 5 μM, 10 μM, 20 μM								
Incubation Time:	30 min								
Result:	Showed KC01 inhibited ABHD16A in a concentration-dependent manner.								

REFERENCES

[1]. Siddhesh S Kamat, et al. Immunomodulatory lysophosphatidylserines are regulated by ABHD16A and ABHD12 interplay. Nat Chem Biol 2015 Feb;11(2):164-71.

Caution: Product has not been fully validated for medical applications. For research use only.

Tel: 609-228-6898

Fax: 609-228-5909

E-mail: tech@MedChemExpress.com

Address: 1 Deer Park Dr, Suite Q, Monmouth Junction, NJ 08852, USA