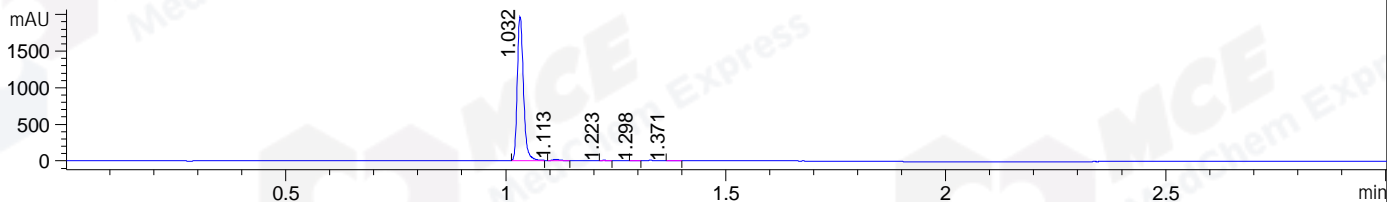
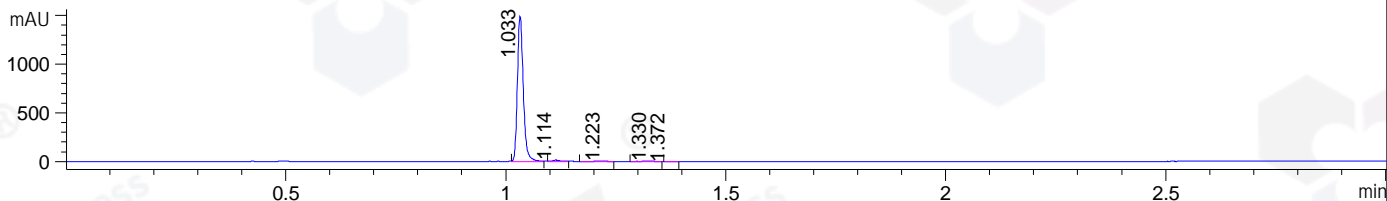


File ..\DATA\2019\20190621\599\CPK2019-620-22012.D Tgt Mass (CHM):  
 Injection Date : 21 Jun 19 12:11 pm +0800 Seq. Line : 45  
 Sample Name : CPK2019-620-22012 Location : P2-A-04  
 Acq. Operator : ZJ\_1432 Inj : 1  
 Spec. Reported : MS Integration Inj Volume : 1 ul  
 Acq. Method : D:\Chem32\1\data\2019\20190621\599\1-POS-3MIN.M  
 Analysis Method : D:\CHEM32\1\DATA\2019\20190621\599\1-POS-3MIN.M  
 Catalog No : HY-12032 Batch# 22012  
 Method Info : Mobile Phase: A: water(0.01%TFA) B:ACN(0.01%TFA)  
 Gradient: 5% to 95%B within 1.3 min  
 Flow Rate :1.8ml/min  
 Column :SunFire C18, 4.6\*50mm,3.5um A-RP-433  
 Oven Temperature : 45□

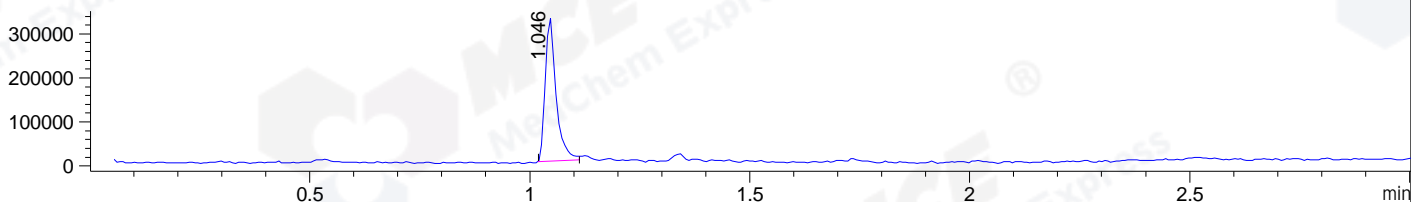
DAD1 B, Sig=214,4 Ref=off



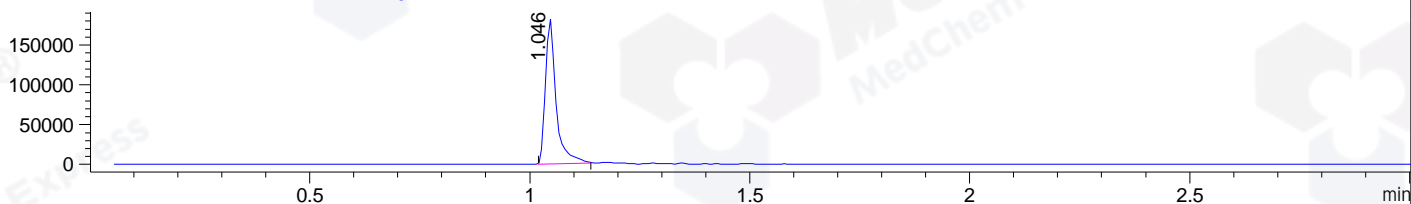
DAD1 C, Sig=254,4 Ref=off



MSD1 TIC, MS File ES-API, Pos, Scan, Frag: 70



Ion 321.3974, MSD1 321.3974, Target Mass 320.3974 +H Positive, EIC=321.10:322.10



Integration Results for DAD1 B, Sig=214,4 Ref=off

RetTim	Width	Area	Height	Area%	MS (+)
1.03	0.02	1912.95	1967.49	98.54	321
1.11	0.02	20.57	19.03	1.06	321
1.22	0.01	4.30	5.05	0.22	512
1.30	0.01	1.30	1.92	0.07	321
1.37	0.01	2.16	2.45	0.11	141

Integration Results for DAD1 C, Sig=254,4 Ref=off

RetTim	Width	Area	Height	Area%	MS (+)
1.03	0.01	1380.66	1490.69	97.87	321
1.11	0.02	15.09	13.15	1.07	321
1.22	0.03	4.95	2.86	0.35	321
1.33	0.03	8.66	4.61	0.61	375
1.37	0.02	1.34	1.48	0.09	141

Integration Results for MSD1 TIC, MS File

RetTim	Width	Area	Height	Area%	MS (+)
--------	-------	------	--------	-------	--------



-----|-----|-----|-----|-----|-----|  
1.05      0.03      564410.19      326394.03      100.00      321

Ret. Time: 1.05

<<<< POSITIVE SPECTRA >>>>

ES-API Positive

