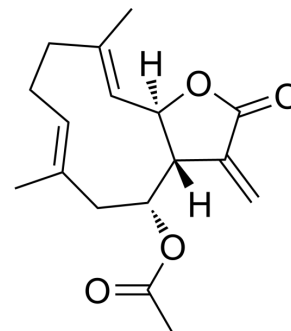


## Epitulipinolide

Cat. No.:	HY-120320
CAS No.:	24164-13-4
Molecular Formula:	C <sub>17</sub> H <sub>22</sub> O <sub>4</sub>
Molecular Weight:	290.35
Target:	Others
Pathway:	Others
Storage:	Please store the product under the recommended conditions in the Certificate of Analysis.



### BIOLOGICAL ACTIVITY

Description	Epitulipinolide (compound 3) is a cytotoxic sesquiterpene <sup>[1]</sup> .
-------------	--

### REFERENCES

[1]. RW Dосkotch, et al. The structure of tulipinolide and epitulipinolide. Cytotoxic sesquiterpenes from *Liriodendron tulipifera* L. J Org Chem. 1970 Jun;35(6):1928-36.

**Caution: Product has not been fully validated for medical applications. For research use only.**

Tel: 609-228-6898

Fax: 609-228-5909

E-mail: tech@MedChemExpress.com

Address: 1 Deer Park Dr, Suite Q, Monmouth Junction, NJ 08852, USA