

## ML67-33

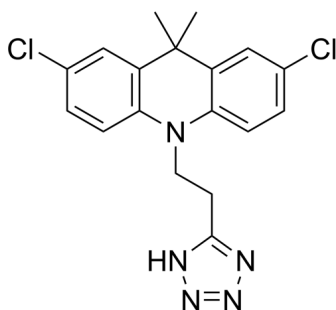
---

Cat. No.: HY-120348  
Batch No.: 212334  
CAS No.: 1443290-89-8  
Molecular Formula: C<sub>18</sub>H<sub>17</sub>Cl<sub>2</sub>N<sub>5</sub>

### ANALYTICAL DATA

Theoretical: C(57.76%), H(4.58%), N(18.71%)  
Result: C(57.84%), H(4.56%), N(18.61%)

Chemical Structure:



**Caution: Product has not been fully validated for medical applications. For research use only.**

Tel: 609-228-6898

Fax: 609-228-5909

E-mail: [tech@MedChemExpress.com](mailto:tech@MedChemExpress.com)

Address: 1 Deer Park Dr, Suite Q, Monmouth Junction, NJ 08852, USA