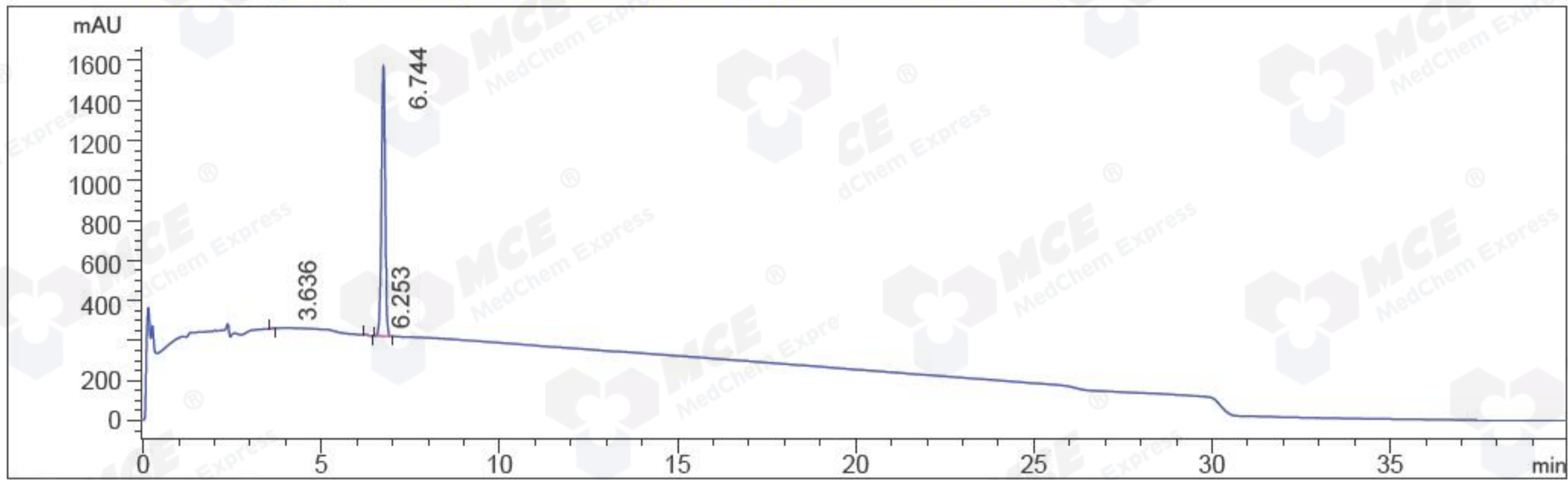


=====

Acq. Operator	: CYL((HPLC-06)	Seq. Line	: 23
Acq. Instrument	: Instrument 1	Location	: Vial 34
Injection Date	: 1/25/2014 2:04:35 AM	Inj	: 1
		Inj Volume	: 5.0 µl
Different Inj Volume from Sequence !		Actual Inj Volume	: 4.0 µl
Acq. Method	: D:\CHEM32\1\DATA\20140124\20140124 2014-01-24 16-26-03\30-90A,35MIN(A2).M		
Last changed	: 1/24/2014 2:54:16 PM by CYL((HPLC-06)		
Analysis Method	: D:\CHEM32\1\METHODS\30-90A.M		
Last changed	: 1/25/2014 9:27:30 AM by CYL((HPLC-06)		
	(modified after loading)		
Method Info	: HPLC-06		
Catalog No	: HY-12037 Batch#10747		
	A-RP-65		

Additional Info : Peak(s) manually integrated
DAD1 A, Sig=210,4 Ref=off (20140124\20140124 2014-01-24 16-26-03\034-2301.D)



=====
Area Percent Report
=====

Sorted By : Signal
Multiplier: : 1.0000
Dilution: : 1.0000
Use Multiplier & Dilution Factor with ISTDs

Signal 1: DAD1 A, Sig=210,4 Ref=off

Peak #	RetTime [min]	Type	Width [min]	Area [mAU*s]	Height [mAU]	Area %
1	3.636	MM R	0.1090	28.57230	4.55276	0.2953
2	6.253	BB	0.0924	20.57181	3.51076	0.2126
3	6.744	BB	0.1109	9627.94922	1355.49011	99.4922

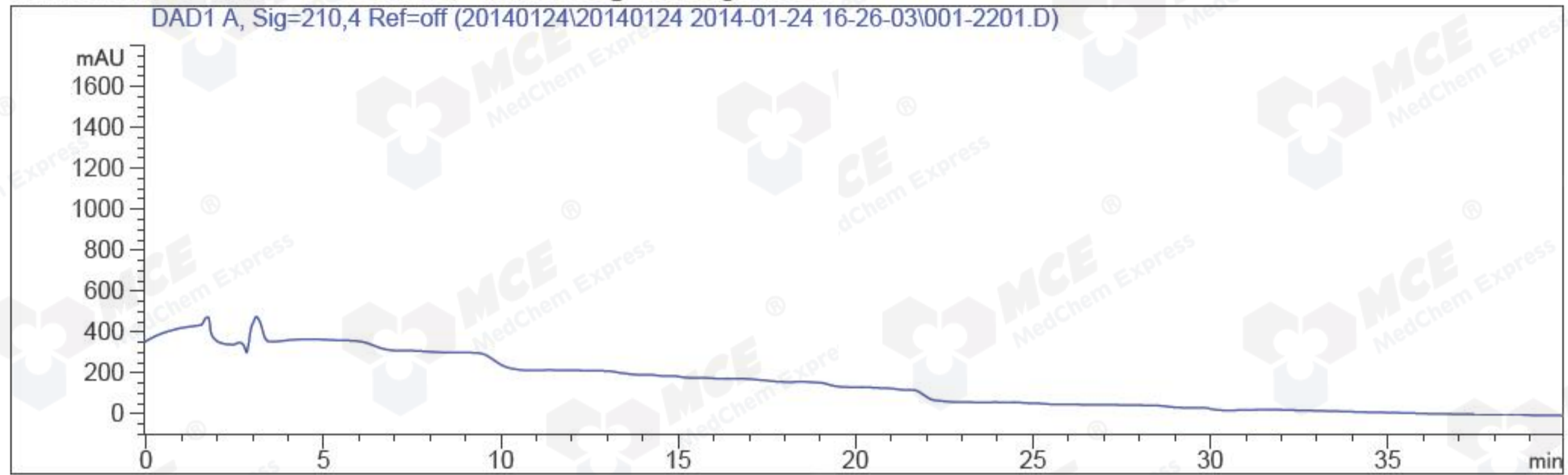
Totals : 9677.09333 1363.55363

=====
*** End of Report ***

=====
Acq. Operator : CYL((HPLC-06) Seq. Line : 22
Acq. Instrument : Instrument 1 Location : Vial 1
Injection Date : 1/25/2014 1:22:50 AM Inj : 1
Inj Volume : 5.0 µl
Acq. Method : D:\CHEM32\1\DATA\20140124\20140124 2014-01-24 16-26-03\30-90A, 35MIN(A2) .M
Last changed : 1/24/2014 2:54:16 PM by CYL((HPLC-06)
Analysis Method : D:\CHEM32\1\METHODS\30-90A.M
Last changed : 1/25/2014 9:29:52 AM by CYL((HPLC-06)
(modified after loading)
Method Info : HPLC-06

Catalog No : HY-12037 Batch#10747
A-RP-65

Additional Info : Peak(s) manually integrated



=====
Area Percent Report
=====

Sorted By : Signal
Multiplier: : 1.0000
Dilution: : 1.0000
Use Multiplier & Dilution Factor with ISTDs

No peaks found

=====
*** End of Report ***
=====