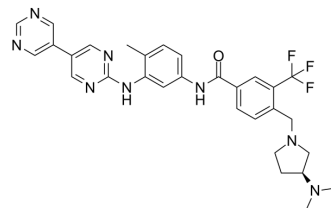


Lyn-IN-1

Cat. No.:	HY-12039		
CAS No.:	887650-05-7		
Molecular Formula:	C ₃₀ H ₃₁ F ₃ N ₈ O		
Molecular Weight:	576.62		
Target:	Bcr-Abl		
Pathway:	Protein Tyrosine Kinase/RTK		
Storage:	Powder	-20°C	3 years
		4°C	2 years
	In solvent	-80°C	6 months
		-20°C	1 month



SOLVENT & SOLUBILITY

In Vitro

DMSO : 50 mg/mL (86.71 mM; Need ultrasonic)

Preparing Stock Solutions	Solvent Concentration	Mass		
		1 mg	5 mg	10 mg
	1 mM	1.7342 mL	8.6712 mL	17.3424 mL
	5 mM	0.3468 mL	1.7342 mL	3.4685 mL
	10 mM	0.1734 mL	0.8671 mL	1.7342 mL

Please refer to the solubility information to select the appropriate solvent.

In Vivo

- Add each solvent one by one: 10% DMSO >> 40% PEG300 >> 5% Tween-80 >> 45% saline
Solubility: ≥ 2.5 mg/mL (4.34 mM); Clear solution
- Add each solvent one by one: 10% DMSO >> 90% (20% SBE-β-CD in saline)
Solubility: 2.5 mg/mL (4.34 mM); Suspended solution; Need ultrasonic
- Add each solvent one by one: 10% DMSO >> 90% corn oil
Solubility: ≥ 2.5 mg/mL (4.34 mM); Clear solution

BIOLOGICAL ACTIVITY

Description

Lyn-IN-1 (Bafetinib analog) is a potent and selective dual Bcr-Abl/Lyn inhibitor, extracted from patent WO2014169128A1.

REFERENCES

[1]. From PCT Int.Appl.(2014), WO2014169128A1

Caution: Product has not been fully validated for medical applications. For research use only.

Tel: 609-228-6898

Fax: 609-228-5909

E-mail: tech@MedChemExpress.com

Address: 1 Deer Park Dr, Suite Q, Monmouth Junction, NJ 08852, USA