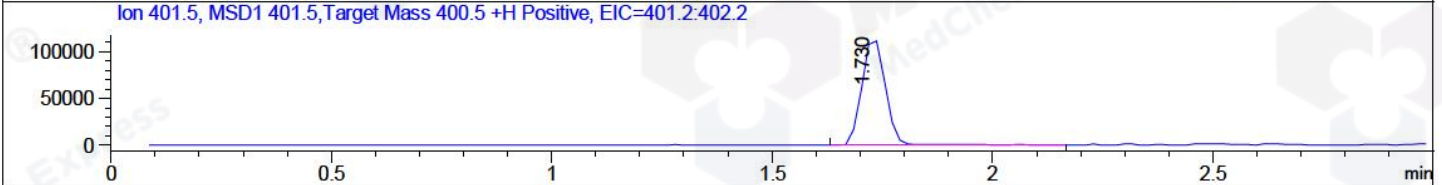
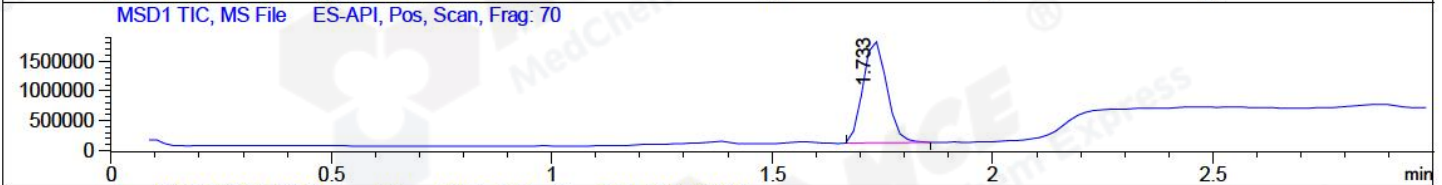
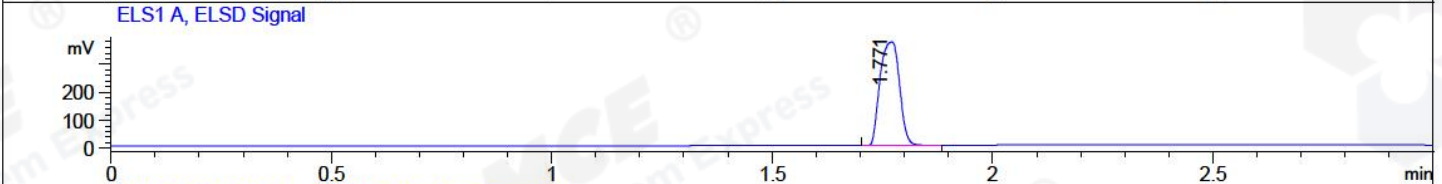
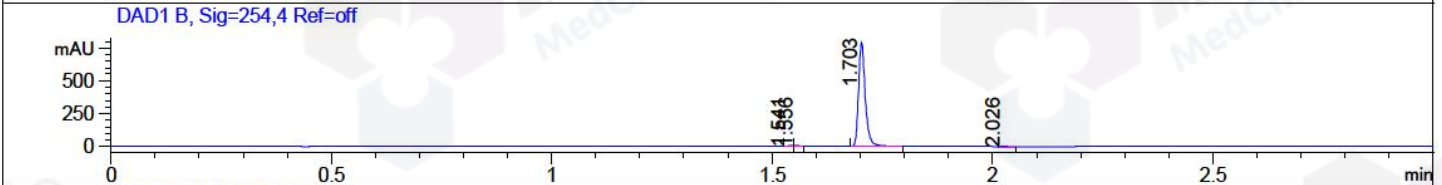
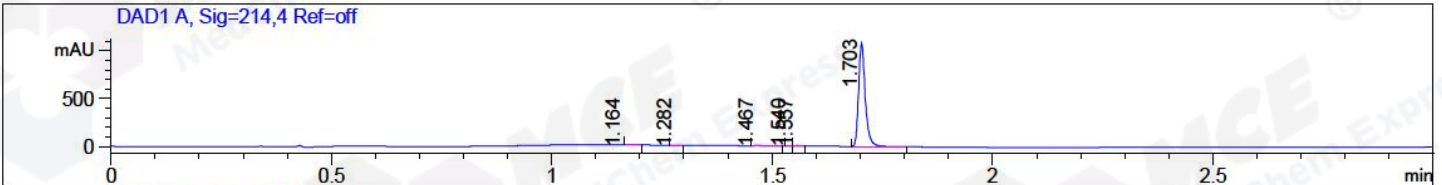


File ..\2018\20180226\20180226\CPK2018-223-07803.D Tgt Mass (CHM):
 Injection Date : 26 Feb 18 2:24 pm +0800 Seq. Line : 74
 Sample Name : CPK2018-223-07803 Location : P1-E-06
 Acq. Operator : SYSTEM Inj : 1
 Spec. Reported : MS Integration Inj Volume : 1 ul
 Acq. Method : D:\LCMS03\Data\2018\20180226\20180226\1-POS-3MIN.M
 Analysis Method : D:\LCMS03\Data\2018\20180226\20180226\1-POS-3MIN.M
 Catalog No : HY-12040 Batch#07803
 Method Info : Mobile Phase: A: water(0.01%TFA) B:ACN(0.01%TFA)
 Gradient: 5% to 95%B within 1.3 min
 Flow Rate :1.8ml/min
 Column :SunFire C18, 4.6*50mm,3.5um A-RP-186
 Oven Temperature : 45C



Integration Results for DAD1 A, Sig=214,4 Ref=off

RetTim	Width	Area	Height	Area%	MS (+)
1.16	0.02	4.20	0.00	0.37	102
1.28	0.02	1.62	1.17	0.14	102
1.47	0.02	2.43	2.04	0.21	102
1.54	0.01	0.61	0.97	0.05	102
1.56	0.01	1.68	2.10	0.15	105
1.70	0.02	1134.89	1075.02	99.08	401

Integration Results for DAD1 B, Sig=254,4 Ref=off

RetTim	Width	Area	Height	Area%	MS (+)
1.54	0.01	0.55	0.81	0.07	102
1.56	0.01	0.68	0.90	0.08	105
1.70	0.02	831.96	788.73	99.80	401
2.03	0.02	0.45	0.47	0.05	105

Integration Results for ELS1 A, ELSD Signal

RetTim	Width	Area	Height	Area%	MS (+)
--------	-------	------	--------	-------	--------

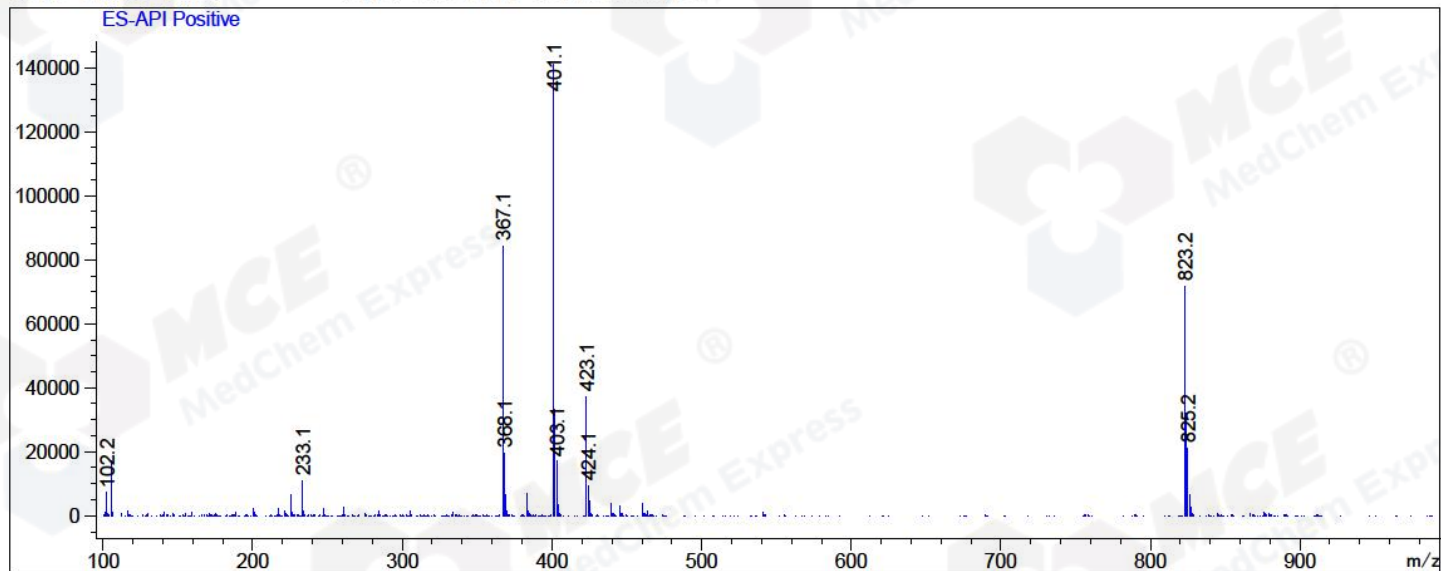
1.77	0.05	1125.97	369.01	100.00	401
------	------	---------	--------	--------	-----

Integration Results for MSD1 TIC, MS File

RetTim	Width	Area	Height	Area%	MS (+)
1.73	0.06	6499938.50	1723107.88	100.00	401

Ret. Time: 1.73

<<< POSITIVE SPECTRA >>>



*** End of Report ***