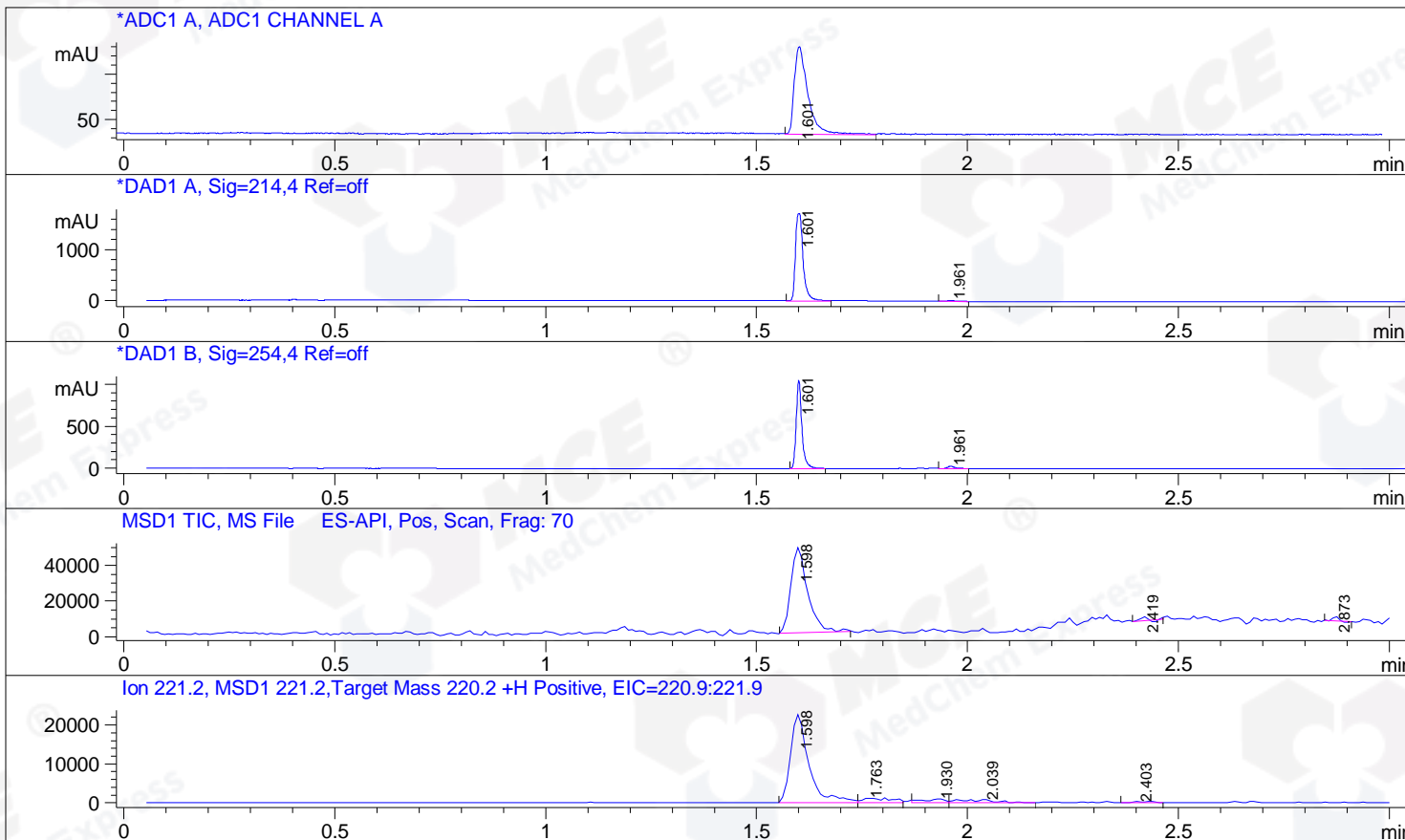


File D:\DATA\A02\MONITOR\CPK2017-705-12858-52506-LCMSA002.D
 Injection Date : 5 Jul 17 7:01 pm +0800 Tgt Mass (EZ) : 220.20
 Sample Name : CPK2017-705-12858 Location : P2-E-02
 Acq. Operator : A02-MONITOR Inj : 1
 Spec. Reported : MS Integration Inj Volume : 2 ul
 Acq. Method : D:\METHODS\1-POS-3MIN-MON.M
 Analysis Method : D:\METHODS\1-POS-3MIN-MON.M
 Catalog No : HY-12041 Batch#12858 Easy-Access Method: '1-POS-3MIN-MON' 220.20
 Method Info : Mobile Phase: A: water(0.01%TFA) B:ACN(0.01%TFA)
 Gradient: 5%B increase to 95%B within 1.6 min,
 95%B for 1.4min,back to 5%B within 0.01min
 Flow Rate:2.0ml/min
 Column :SunFire C18, 4.6*50mm, 3.5um
 Oven Temperature : 50C



Integration Results for ADC1 A, ADC1 CHANNEL A

RetTim	Width	Area	Height	Area%
1.60	0.03	21.89	9.63	100.00

Integration Results for DAD1 A, Sig=214,4 Ref=off

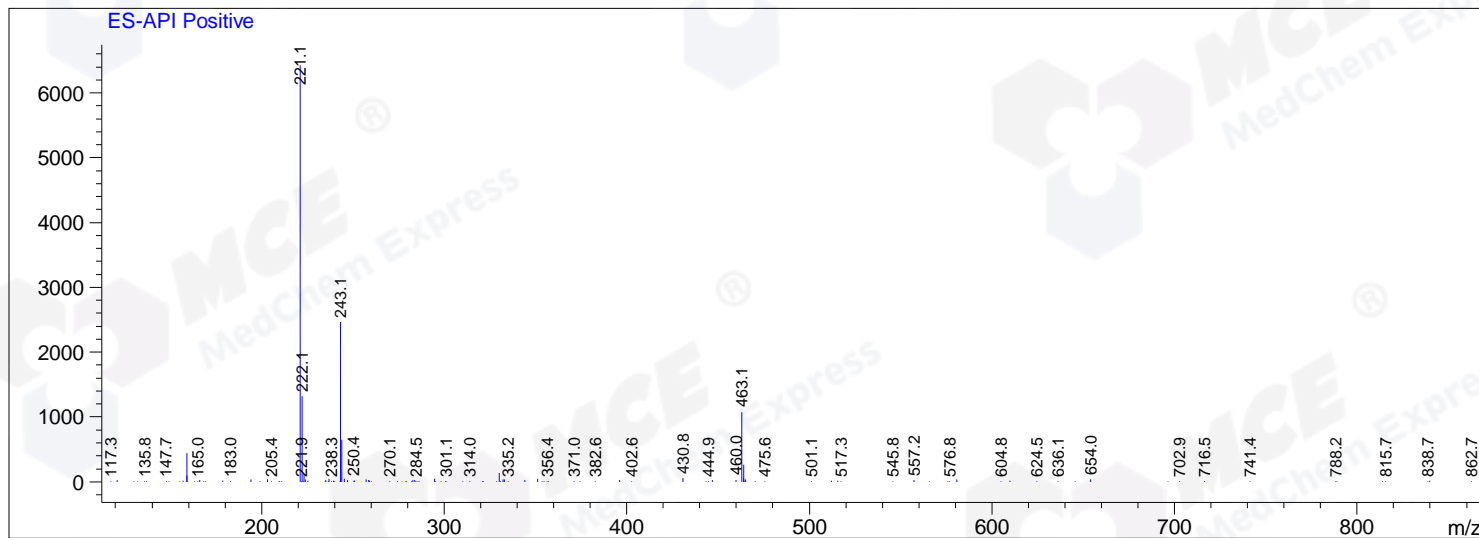
RetTim	Width	Area	Height	Area%
1.60	0.02	2181.67	1675.05	98.69
1.96	0.02	28.97	21.82	1.31

Integration Results for DAD1 B, Sig=254,4 Ref=off

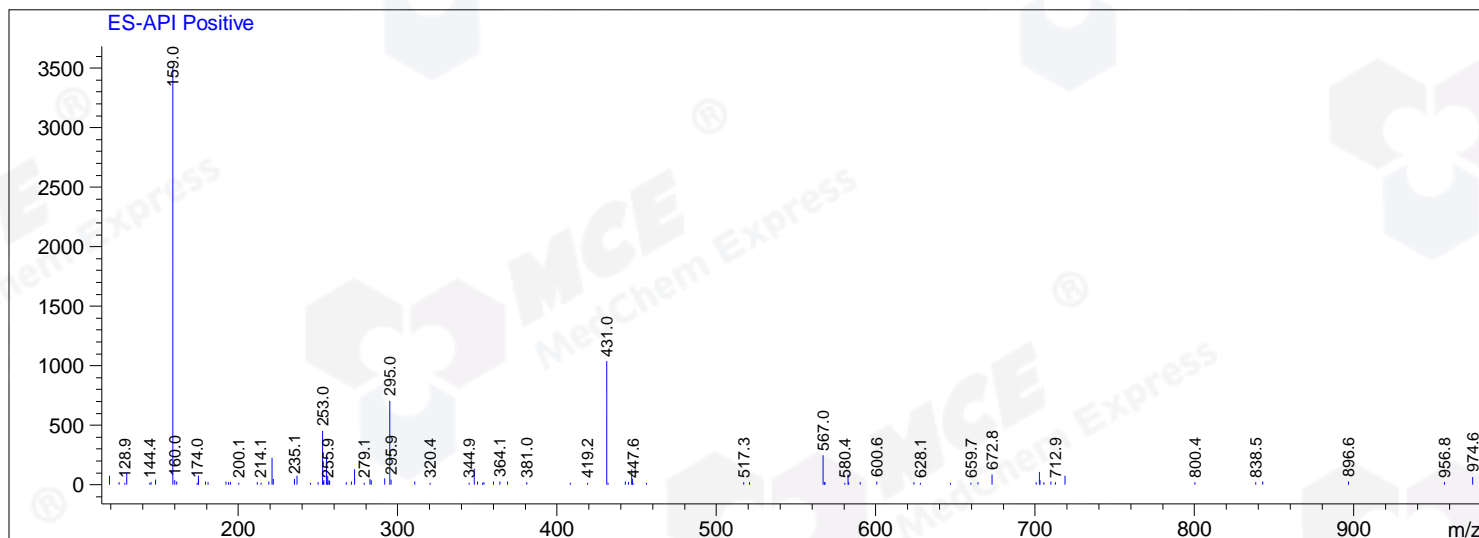
RetTim	Width	Area	Height	Area%
1.60	0.02	997.08	910.55	96.01
1.96	0.02	41.41	27.70	3.99

Ret. Time: 1.60

<<<< POSITIVE SPECTRA >>>>



Ret. Time: 2.42



Ret. Time: 2.87

