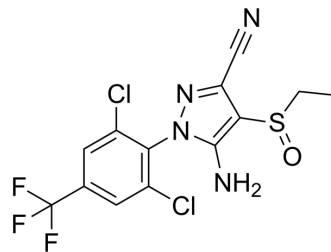


Ethiprole

Cat. No.:	HY-120425
CAS No.:	181587-01-9
Molecular Formula:	C ₁₃ H ₉ Cl ₂ F ₃ N ₄ OS
Molecular Weight:	397.2
Target:	Others
Pathway:	Others
Storage:	Please store the product under the recommended conditions in the Certificate of Analysis.



BIOLOGICAL ACTIVITY

Description

Ethiprole is an insecticide. Metabolic sulfones are produced faster than Fipronil (HY-B0822) in CYP3A4-expressing cells and in vivo in mouse brain and liver. Ethiprole's sulfide, sulfoxide, sulfone and desulfinyl derivatives have better biological activity [1].

REFERENCES

[1]. Caboni P, Sammelson RE, Casida JE. Phenylpyrazole insecticide photochemistry, metabolism, and GABAergic action: ethiprole compared with fipronil. J Agric Food Chem. 2003 Nov 19;51(24):7055-61.

Caution: Product has not been fully validated for medical applications. For research use only.

Tel: 609-228-6898

Fax: 609-228-5909

E-mail: tech@MedChemExpress.com

Address: 1 Deer Park Dr, Suite Q, Monmouth Junction, NJ 08852, USA