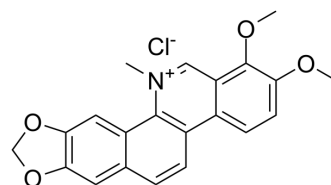


Chelerythrine chloride

Cat. No.:	HY-12048
CAS No.:	3895-92-9
Molecular Formula:	C ₂₁ H ₁₈ ClNO ₄
Molecular Weight:	383.82
Target:	PKC; Bcl-2 Family; Apoptosis; Autophagy
Pathway:	Epigenetics; TGF-beta/Smad; Apoptosis; Autophagy
Storage:	4°C, sealed storage, away from moisture * In solvent : -80°C, 6 months; -20°C, 1 month (sealed storage, away from moisture)



SOLVENT & SOLUBILITY

In Vitro	DMSO : 4.35 mg/mL (11.33 mM; Need ultrasonic)					
		Solvent Concentration	Mass			
	Preparing Stock Solutions			1 mg	5 mg	10 mg
		1 mM		2.6054 mL	13.0269 mL	26.0539 mL
		5 mM		0.5211 mL	2.6054 mL	5.2108 mL
	10 mM		0.2605 mL	1.3027 mL	2.6054 mL	
Please refer to the solubility information to select the appropriate solvent.						
In Vivo	1. Add each solvent one by one: 10% DMSO >> 90% (20% SBE-β-CD in saline) Solubility: ≥ 0.44 mg/mL (1.15 mM); Clear solution					
	2. Add each solvent one by one: 10% DMSO >> 90% corn oil Solubility: ≥ 0.44 mg/mL (1.15 mM); Clear solution					
	3. Add each solvent one by one: 10% DMSO >> 40% PEG300 >> 5% Tween-80 >> 45% saline Solubility: ≥ 0.43 mg/mL (1.12 mM); Clear solution					

BIOLOGICAL ACTIVITY

Description	Chelerythrine chloride is a potent, cell-permeable inhibitor of protein kinase C, with an IC ₅₀ of 660 nM. Chelerythrine chloride inhibits the Bcl-XL-Bak BH3 peptide binding with IC ₅₀ of 1.5 μM and displaces Bax from Bcl-XL. Chelerythrine chloride induces apoptosis and autophagy.		
IC₅₀ & Target	PKC 660 nM (IC ₅₀)	PKA 0.17 mM (IC ₅₀)	TPK 0.1 mM (IC ₅₀)
In Vitro	Chelerythrine inhibits the BclXL-Bak BH3 peptide binding with IC ₅₀ of 1.5 μM and displaces Bax, a BH3-containing protein, from BclXL. Mammalian cells treated with Chelerythrine undergoes apoptosis with characteristic features that suggest		

involvement of the mitochondrial pathway^[1]. Chelerythrine treatment inhibits LPS-induced TNF- α level and NO production in LPS-induced murine peritoneal macrophages through selective inhibition of p38 mitogen-activated protein kinase (MAPK) and extracellular signal-regulated protein kinases 1 and 2 (ERK1/2) activation. Moreover, the effects of chelerythrine on NO and cytokine TNF- α production can possibly be explained by the role of p38 MAPK and ERK1/2 in the regulation of inflammatory mediators expression^[2]. Chelerythrine shows cytotoxic effect on the human monocytic leukaemia cells with LD₅₀ value of 3.46 μ M. Two hours after LPS stimulation, cells influenced by sanguinarine and Chelerythrine significantly decline the CCL-2 expression by a factors of 3.5 and 1.9^[3]. Chelerythrine chloride significantly enhances the phosphorylation of ERK1/2 in a dose-dependent manner. In addition, chelerythrine chloride inhibits the phosphorylation of p38^[4]. MCE has not independently confirmed the accuracy of these methods. They are for reference only.

In Vivo

Chelerythrine displays significant anti-inflammatory effects in experimentally induced mice endotoxic shock model in vivo through inhibition of LPS-induced tumor necrosis factor-alpha (TNF- α) level and nitric oxide (NO) production in serum^[2]. Chelerythrine chloride (5 mg/kg/day, i.p.) induces apoptosis of RCC cells without significant toxicity to mice. Chelerythrine Chloride treatment leads to a dose-dependent accumulation of p53^[4]. MCE has not independently confirmed the accuracy of these methods. They are for reference only.

PROTOCOL

Cell Assay ^[1]

Cell viability is evaluated via MTT assay. Cells (2×10^3 HEK-293 cells/well and 3×10^3 SW-839 cells/well) in 100 μ L medium are seeded into 96-well plates, and incubated for 12 h. Next, the medium in each well is replaced with medium containing various concentrations of Chelerythrine Chloride, and the cells are incubated at 37°C for an additional 24 and 48 h. Subsequently, 20 μ L MTT (5 mg/mL) is added to each well. Following an additional incubation at 37°C for 4 h, the supernatant is removed, and 100 μ L DMSO is added to each well. The absorbance values (read at 540 nm) are determined using the iMark™ Microplate Absorbance Reader. The data are analyzed using Microplate Manager software (ver. 6.3; 1689520).

MCE has not independently confirmed the accuracy of these methods. They are for reference only.

Animal Administration ^[1]

A total of 5×10^6 SW-839 cells are mixed with Matrigel®, and injected subcutaneously into the flanks of 14 5-week-old male BALB/c nude mice. The mice are maintained in 18×30-cm cages containing three mice each, at a temperature of 22°C using a 12 h light/dark cycle. Food and water is available ad libitum. The mice are randomly divided into two groups (n=7). As previously described, the mice are administered with chelerythrine chloride at a dose of 5 mg/kg/day via intraperitoneal injection for 5 weeks, with the first injection of chelerythrine chloride occurring 24 h after injection with the SW-839 cells. The control mice are administered with the same volume of PBS containing 1% DMSO. The volume and weight of the mouse tumors are measured once a week. All the mice are sacrificed 36 days subsequent to inoculation of the cancer cells, when the tumors are resected.

MCE has not independently confirmed the accuracy of these methods. They are for reference only.

CUSTOMER VALIDATION

- FASEB J. 2019 Dec;33(12):13644-13659.
- J Headache Pain. 2022 Mar 8;23(1):35.
- Cell Commun Signal. 2021 Oct 11;19(1):103.
- Front Pharmacol. 13 May 2021.
- Sci Rep. 2017 Aug 23;7(1):9201.

See more customer validations on www.MedChemExpress.com

REFERENCES

- [1]. Li W, et al. Effect of Chelerythrine Against Endotoxic Shock in Mice and Its Modulation of Inflammatory Mediators in Peritoneal Macrophages Through the Modulation of Mitogen-Activated Protein Kinase (MAPK) Pathway. *Inflammation*. 2012 Jul 24.
- [2]. Pencikova K, et al. Investigation of sanguinarine and chelerythrine effects on LPS-induced inflammatory gene expression in THP-1 cell line. *Phytomedicine*. 2012 Jul 15;19(10):890-5. Epub 2012 May 14.
- [3]. Chen XM, et al. Chelerythrine chloride induces apoptosis in renal cancer HEK-293 and SW-839 cell lines. *Oncol Lett*. 2016 Jun;11(6):3917-3924
- [4]. Herbert JM, et al. Chelerythrine is a potent and specific inhibitor of protein kinase C. *Biochem Biophys Res Commun*. 1990 Nov 15;172(3):993-9.
- [5]. Chan SL, et al. Identification of chelerythrine as an inhibitor of BclXL function. *J Biol Chem*. 2003 Jun 6;278(23):20453-6.
- [6]. Tang ZH, et al. Induction of reactive oxygen species-stimulated distinctive autophagy by chelerythrine in non-small cell lung cancer cells. *Redox Biol*. 2017 Aug;12:367-376.
-

Caution: Product has not been fully validated for medical applications. For research use only.

Tel: 609-228-6898

Fax: 609-228-5909

E-mail: tech@MedChemExpress.com

Address: 1 Deer Park Dr, Suite Q, Monmouth Junction, NJ 08852, USA