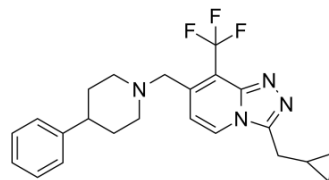


JNJ-46281222

Cat. No.:	HY-120530		
CAS No.:	1254980-38-5		
Molecular Formula:	C ₂₃ H ₂₅ F ₃ N ₄		
Molecular Weight:	414.47		
Target:	mGluR		
Pathway:	GPCR/G Protein; Neuronal Signaling		
Storage:	Powder	-20°C	3 years
		4°C	2 years
	In solvent	-80°C	6 months
		-20°C	1 month



SOLVENT & SOLUBILITY

In Vitro	DMSO : 62.5 mg/mL (150.79 mM; Need ultrasonic)				
		Solvent Concentration	Mass 1 mg	5 mg	10 mg
	Preparing Stock Solutions	1 mM	2.4127 mL	12.0636 mL	24.1272 mL
		5 mM	0.4825 mL	2.4127 mL	4.8254 mL
10 mM		0.2413 mL	1.2064 mL	2.4127 mL	
Please refer to the solubility information to select the appropriate solvent.					
In Vivo	<ol style="list-style-type: none"> Add each solvent one by one: 10% DMSO >> 90% (20% SBE-β-CD in saline) Solubility: ≥ 2.08 mg/mL (5.02 mM); Clear solution Add each solvent one by one: 10% DMSO >> 90% corn oil Solubility: ≥ 2.08 mg/mL (5.02 mM); Clear solution 				

BIOLOGICAL ACTIVITY

Description	JNJ-46281222 is a metabotropic glutamate (mGlu) 2-selective, highly potent PAM (positive allosteric modulator) with nanomolar affinity ($K_D = 1.7$ nM) and a high modulatory potency ($pEC_{50} = 7.71$) ^[1] .
IC₅₀ & Target	mGluR2 1.7 nM (K _d)
In Vitro	JNJ-46281222 binds to the selected mGlu2 receptor mutants is significantly decreased by approximately 10 ³ -fold compared with WT, in transfected mGlu2 WT and mutant receptors in CHO-K1 cells, mutations F643A and N735D are selected ^[1] . MCE has not independently confirmed the accuracy of these methods. They are for reference only. Western Blot Analysis ^[1]

Cell Line:	CHO α K1 cells
Concentration:	
Incubation Time:	
Result:	Showed a decreased expression of mGlu2 receptor in mutant cells.

REFERENCES

[1]. Doornbos ML, et al. Molecular mechanism of positive allosteric modulation of the metabotropic glutamate receptor 2 by JNJ-46281222. Br J Pharmacol. 2016 Feb;173(3):588-600.

Caution: Product has not been fully validated for medical applications. For research use only.

Tel: 609-228-6898

Fax: 609-228-5909

E-mail: tech@MedChemExpress.com

Address: 1 Deer Park Dr, Suite Q, Monmouth Junction, NJ 08852, USA