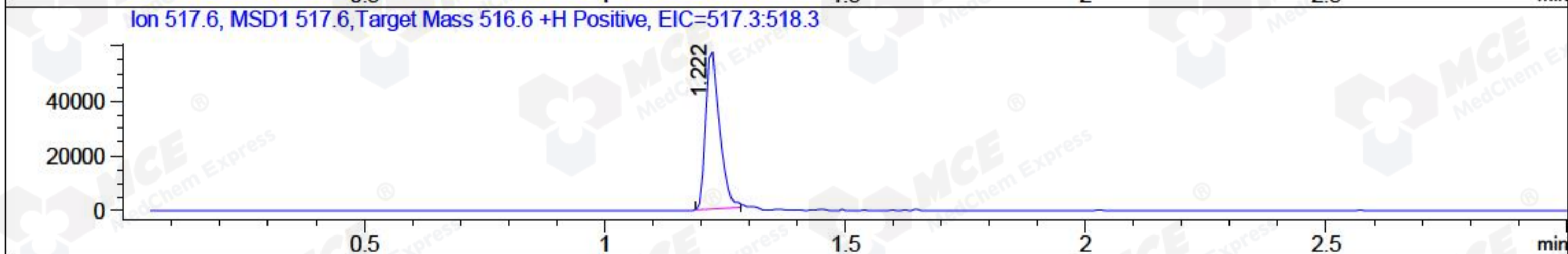
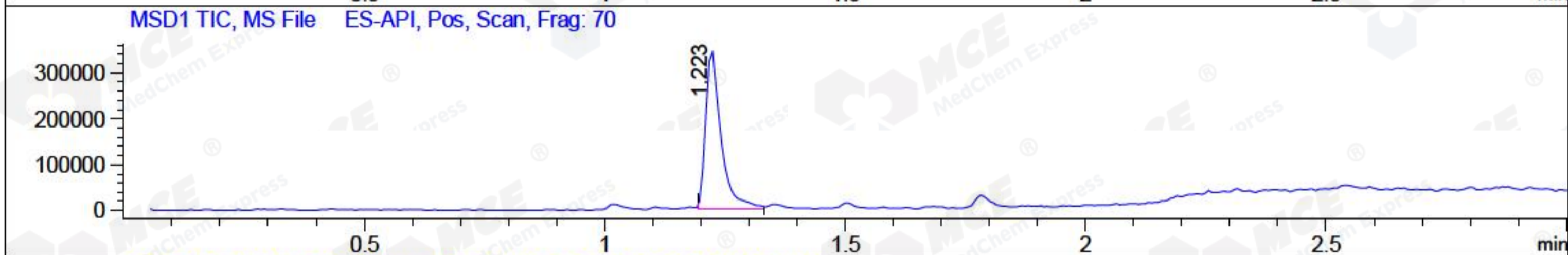
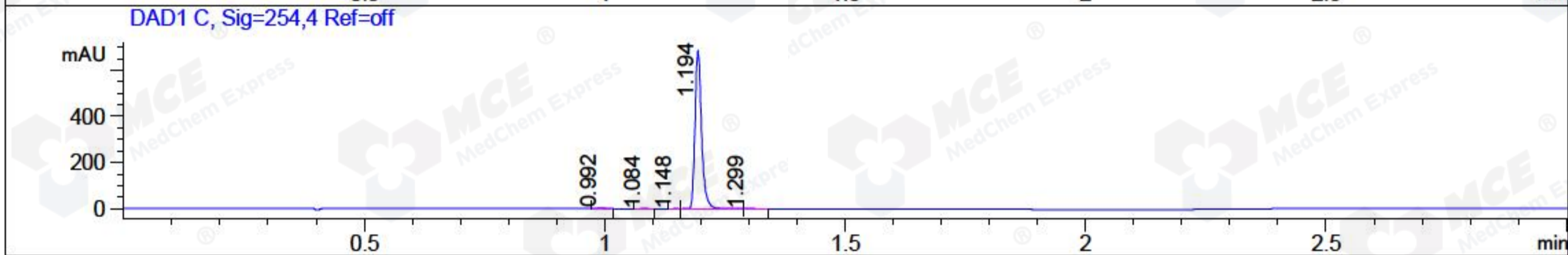
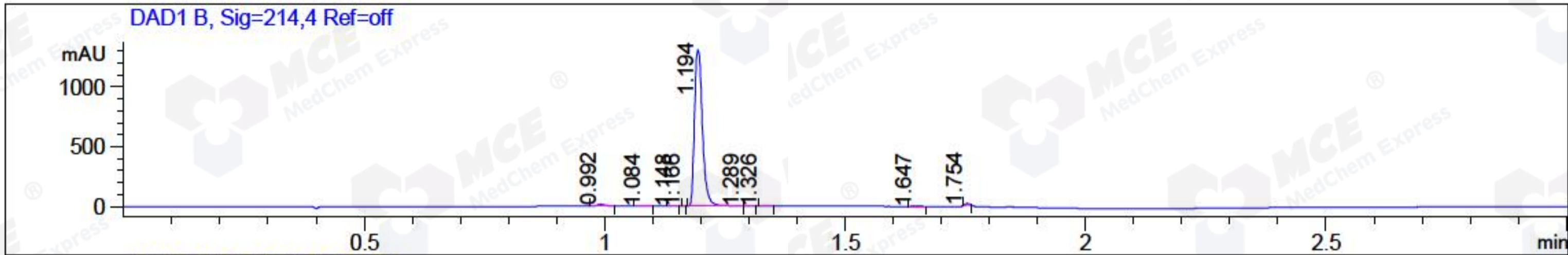


File ..4-4 2018-01-24 16-37-32\CPK2018-124-08617.D Tgt Mass (CHM):
 Injection Date : 24 Jan 18 5:06 pm +0800 Seq. Line : 7
 Sample Name : CPK2018-124-08617 Location : P2-E-05
 Acq. Operator : HCL_771 Inj : 1
 Spec. Reported : MS Integration Inj Volume : 1 ul
 Acq. Method : D:\chem32\1\DATA\20180124\20180124-4 2018-01-24 16-37-32\1-POS-3MIN-1.M
 Analysis Method : D:\CHEM32\1\DATA\20180124\20180124-4 2018-01-24 16-37-32\1-POS-3MIN-1.M
 Catalo No : HY-12054 Batch#08617 A-RP-189
 Method Info : Mobile Phase: A: water(0.01%TFA) B:ACN(0.01%TFA)
 Gradient: 5% to 95%B within 1.3 min
 Flow Rate :1.8ml/min
 Column :SunFire C18, 4.6*50mm,3.5um A-RP-186
 Oven Temperature : 45C



Integration Results for DAD1 B, Sig=214,4 Ref=off

RetTim	Width	Area	Height	Area%	MS (+)
0.99	0.02	16.59	14.47	1.08	213
1.08	0.02	1.79	1.68	0.12	ND
1.15	0.01	0.91	1.37	0.06	ND
1.17	0.01	0.11	0.31	0.01	220
1.19	0.02	1496.92	1307.69	97.78	517
1.29	0.01	0.87	-0.13	0.06	282
1.33	0.01	0.69	0.93	0.05	517
1.65	0.01	5.70	5.66	0.37	ND
1.75	0.01	7.31	13.30	0.48	475

Integration Results for DAD1 C, Sig=254,4 Ref=off

RetTim	Width	Area	Height	Area%	MS (+)
0.99	0.02	6.48	5.78	0.97	213
1.08	0.03	1.30	1.03	0.19	ND
1.15	0.02	0.80	0.90	0.12	ND
1.19	0.02	660.69	687.37	98.48	517
1.30	0.02	1.64	1.50	0.24	517

Integration Results for MSD1 TIC, MS File

RetTim	Width	Area	Height	Area%	MS (+)
1.22	0.03	769016.50	345590.31	100.00	517

Ret. Time: 1.22

<<<< POSITIVE SPECTRA >>>>

