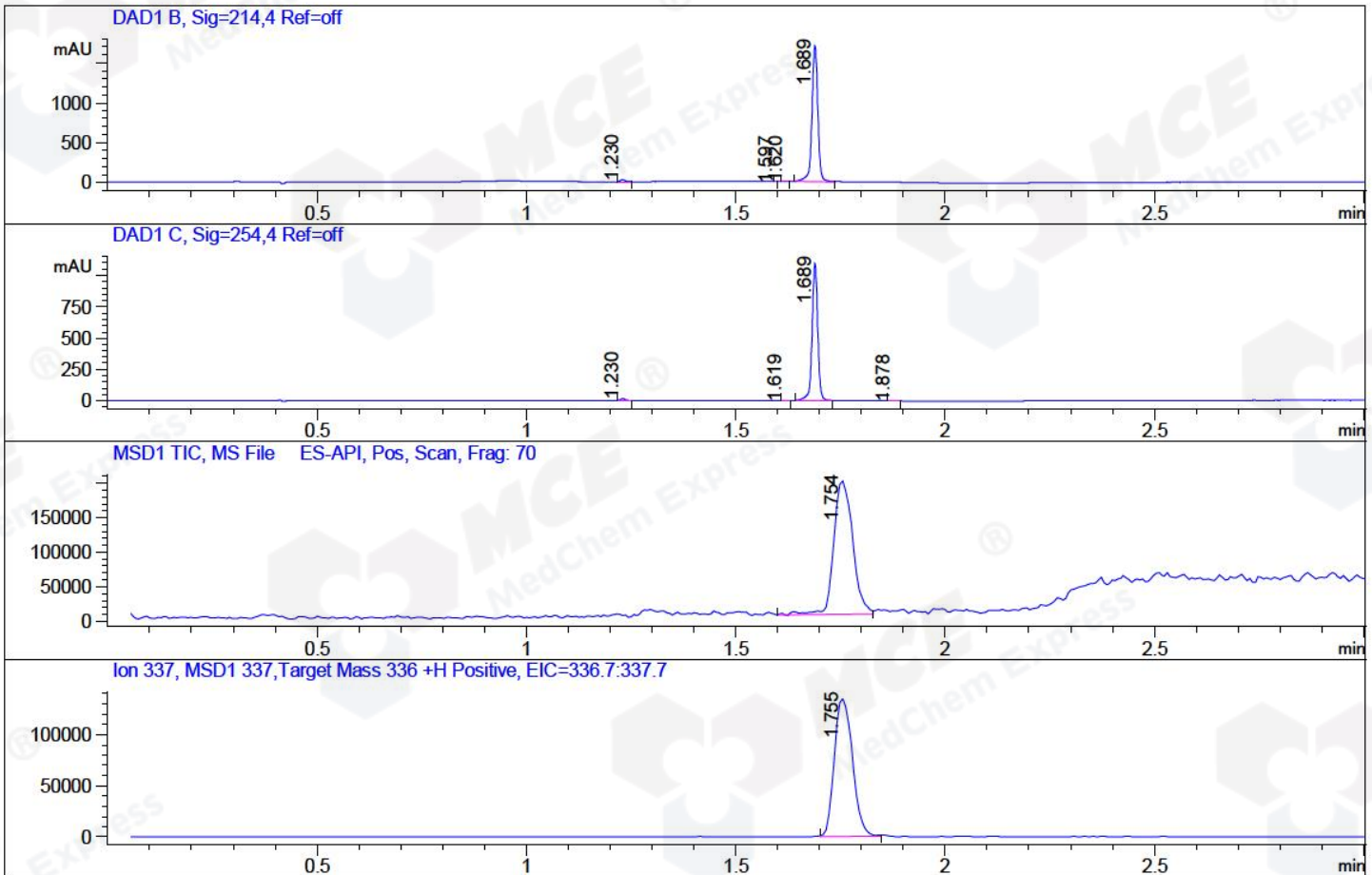


File ..\DATA\2018\20180830\374\CPK2018-830-03538.D Tgt Mass (CHM):  
 Injection Date : 30 Aug 18 11:15 am +0800 Seq. Line : 2  
 Sample Name : CPK2018-830-03538 Location : P2-F-07  
 Acq. Operator : LQ\_1052 Inj : 1  
 Spec. Reported : MS Integration Inj Volume : 1 ul  
 Acq. Method : D:\Chem32\1\data\2018\20180830\374\1-POS-3MIN-1.M  
 Analysis Method : D:\CHEM32\1\DATA\2018\20180830\374\1-POS-3MIN-1.M  
 Catalog No: HY-12070 Batch#03538 A-RP-314  
 Method Info : Mobile Phase: A: water(0.01%TFA) B:ACN(0.01%TFA)  
 Gradient: 5% to 95%B within 1.3 min  
 Flow Rate :1.8ml/min  
 Column :SunFire C18, 4.6\*50mm,3.5um A-RP-314  
 Oven Temperature : 45□



## Integration Results for DAD1 B, Sig=214,4 Ref=off

RetTim	Width	Area	Height	Area%	MS (+)
1.23	0.01	18.13	23.69	1.07	ND
1.60	0.01	0.19	0.58	0.01	ND
1.62	0.01	1.40	1.99	0.08	141
1.69	0.02	1673.08	1709.34	98.83	337

## Integration Results for DAD1 C, Sig=254,4 Ref=off

RetTim	Width	Area	Height	Area%	MS (+)
1.23	0.01	14.76	18.77	1.41	ND
1.62	0.01	0.93	1.48	0.09	141
1.69	0.01	1031.10	1097.17	98.42	337
1.88	0.02	0.83	0.70	0.08	141

## Integration Results for MSD1 TIC, MS File

RetTim	Width	Area	Height	Area%	MS (+)
1.75	0.05	606960.75	193595.56	100.00	337

Ret. Time: 1.75

<<<< POSITIVE SPECTRA >>>>

ES-API Positive

