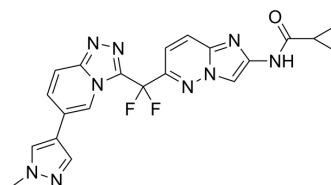


c-Met-IN-16

Cat. No.:	HY-120908
CAS No.:	1208248-23-0
Molecular Formula:	C ₂₁ H ₁₇ F ₂ N ₉ O
Molecular Weight:	449.42
Target:	c-Met/HGFR
Pathway:	Protein Tyrosine Kinase/RTK
Storage:	Please store the product under the recommended conditions in the Certificate of Analysis.



BIOLOGICAL ACTIVITY

Description	c-Met-IN-16 is a c-Met inhibitor that can be used for cancer research ^[1] .
IC ₅₀ & Target	c-Met

REFERENCES

[1]. Pamela Farrell, et al. COMBINATION OF A cMET INHIBITOR AND AN ANTIBODY TO HGF AND/OR cMET. Patent WO2012003338A1.

Caution: Product has not been fully validated for medical applications. For research use only.

Tel: 609-228-6898

Fax: 609-228-5909

E-mail: tech@MedChemExpress.com

Address: 1 Deer Park Dr, Suite Q, Monmouth Junction, NJ 08852, USA