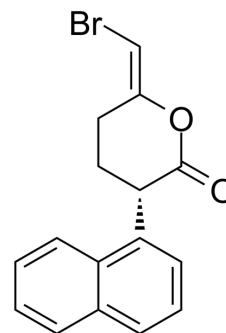


(S)-Bromo-enol lactone

Cat. No.:	HY-120986
CAS No.:	478288-94-7
Molecular Formula:	C ₁₆ H ₁₃ BrO ₂
Molecular Weight:	317.18
Target:	Phospholipase
Pathway:	Metabolic Enzyme/Protease
Storage:	Solution, -20°C, 2 years



BIOLOGICAL ACTIVITY

Description	(S)-Bromo-enol lactone ((S)-BEL) is an irreversible, chiral, mechanism-based inhibitor of calcium-independent phospholipase A ₂ β (iPLA ₂ β) that inhibits the vasopressin-induced release of arachidonate from cultured rat aortic smooth muscle (A10) cells with an IC ₅₀ of 2 μM ^[1] .
IC ₅₀ & Target	PLA2

REFERENCES

[1]. Jenkins CM, et al. Identification of calcium-independent phospholipase A₂ (iPLA₂) beta, and not iPLA₂gamma, as the mediator of arginine vasopressin-induced arachidonic acid release in A-10 smooth muscle cells. Enantioselective mechanism-based discriminati

Caution: Product has not been fully validated for medical applications. For research use only.

Tel: 609-228-6898

Fax: 609-228-5909

E-mail: tech@MedChemExpress.com

Address: 1 Deer Park Dr, Suite Q, Monmouth Junction, NJ 08852, USA