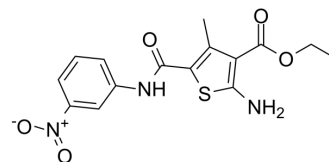


## DC-S239

Cat. No.:	HY-121093		
CAS No.:	303141-21-1		
Molecular Formula:	C <sub>15</sub> H <sub>15</sub> N <sub>3</sub> O <sub>5</sub> S		
Molecular Weight:	349.36		
Target:	Histone Methyltransferase		
Pathway:	Epigenetics		
Storage:	Powder	-20°C	3 years
		4°C	2 years
	In solvent	-80°C	6 months
		-20°C	1 month



### SOLVENT & SOLUBILITY

#### In Vitro

DMSO : 125 mg/mL (357.80 mM; Need ultrasonic)

Concentration	Mass		
	1 mg	5 mg	10 mg
1 mM	2.8624 mL	14.3119 mL	28.6238 mL
5 mM	0.5725 mL	2.8624 mL	5.7248 mL
10 mM	0.2862 mL	1.4312 mL	2.8624 mL

Please refer to the solubility information to select the appropriate solvent.

### BIOLOGICAL ACTIVITY

#### Description

DC-S239 is a selective histone methyltransferase SET7 inhibitor with an IC<sub>50</sub> value of 4.59 μM. DC-S239 also displays selectivity for DNMT1, DOT1L, EZH2, NSD1, SETD8 and G9a. DC-S239 has anticancer activity<sup>[1]</sup>.

#### IC<sub>50</sub> & Target

IC<sub>50</sub>: 4.59 μM (SET7)<sup>[1]</sup>

#### In Vitro

DC-S239 inhibits DNMT1, DOT1L, EZH2, NSD1, SETD8 and G9a by less than 45%, while it inhibits SET7 by 90% at concentrations of 100 μM<sup>[1]</sup>.

DC-S239 (0-100 μM, 120 h) can inhibit the proliferation of MCF7, HL60 and MV4-11 cells in a dose-dependent manner but no significant effect on the activity of HCT116 and DHL4 cells<sup>[1]</sup>.

MCE has not independently confirmed the accuracy of these methods. They are for reference only.

#### Cell Viability Assay<sup>[1]</sup>

Cell Line: MCF7, HL60, DHL4, MV4-11 and HCT116 cell lines

Concentration: 0-100 μM

---

Incubation Time:	120 h
Result:	Inhibited MCF7 and HL60 with the IC <sub>50</sub> values of 10.93 μM and 16.43 μM, respectively.

---

## REFERENCES

---

[1]. Fanwang Meng, et al. Discovery and Optimization of Novel, Selective Histone Methyltransferase SET7 Inhibitors by Pharmacophore- and Docking-Based Virtual Screening. J Med Chem. 2015 Oct 22;58(20):8166-81.

---

**Caution: Product has not been fully validated for medical applications. For research use only.**

Tel: 609-228-6898

Fax: 609-228-5909

E-mail: [tech@MedChemExpress.com](mailto:tech@MedChemExpress.com)

Address: 1 Deer Park Dr, Suite Q, Monmouth Junction, NJ 08852, USA