

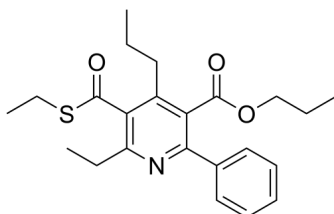
MRS 1523

Cat. No.: HY-121119
Batch No.: 152139
CAS No.: 212329-37-8
Molecular Formula: C₂₃H₂₉NO₃S

ANALYTICAL DATA

Theoretical: C(69.14%), H(7.32%), N(3.51%)
Result: C(69.35%), H(7.26%), N(3.44%)

Chemical Structure:



Caution: Product has not been fully validated for medical applications. For research use only.

Tel: 609-228-6898

Fax: 609-228-5909

E-mail: tech@MedChemExpress.com

Address: 1 Deer Park Dr, Suite Q, Monmouth Junction, NJ 08852, USA