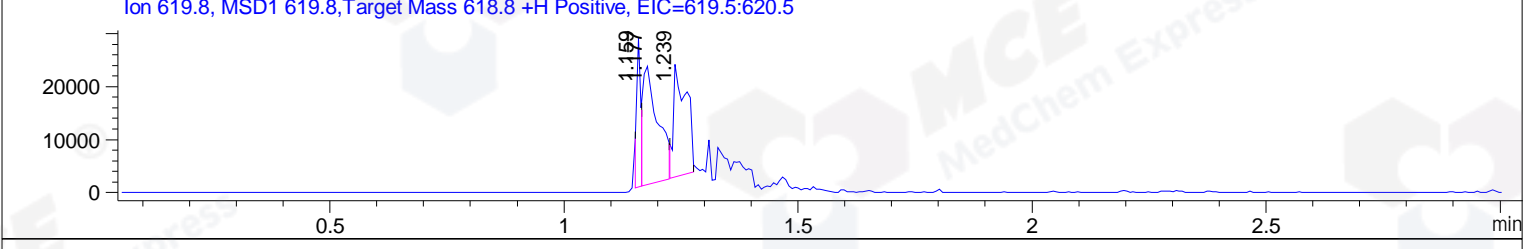
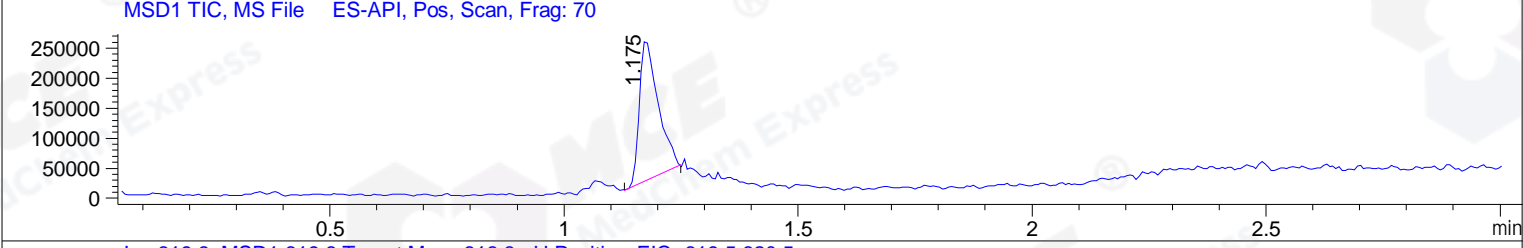
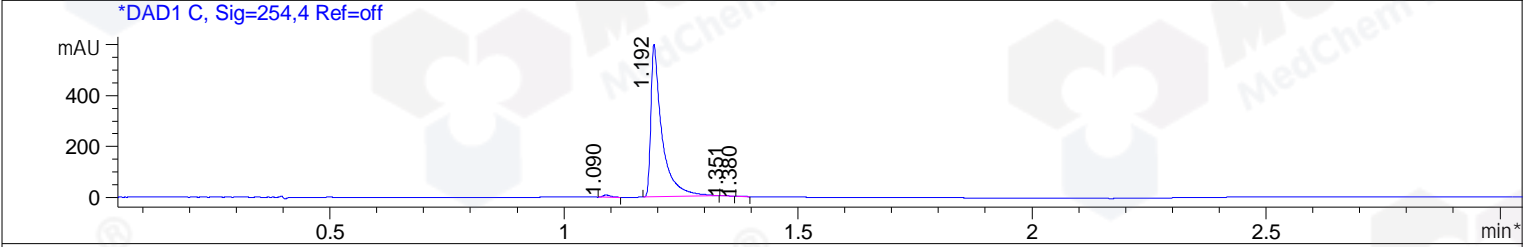
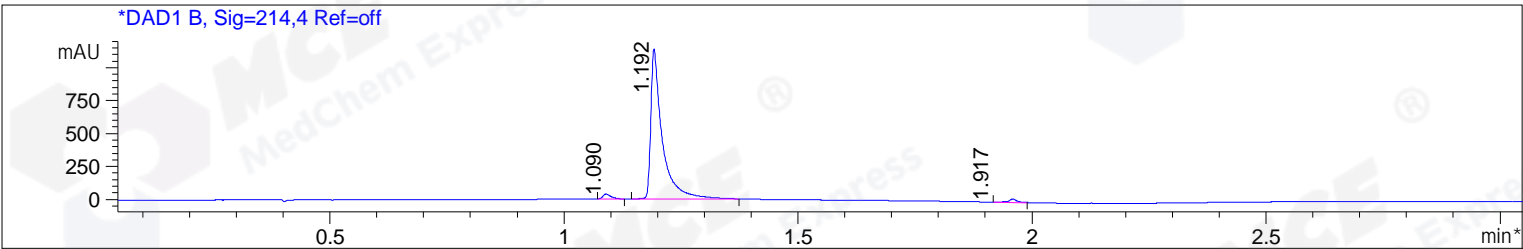


File D:\CHEM32\1\DATA\CPK\CPK2017-106-12094.D Tgt Mass (EZX): 618.80
 Injection Date : 6 Jan 17 1:09 pm +0800 Seq. Line : 0
 Sample Name : CPK2017-106-12094 Location : P2-A-04
 Acq. Operator : KFF(LCMS-02) Inj : 1
 Spec. Reported : MS Integration Inj Volume : 1 ul
 Acq. Method : D:\Chem32\1\METHODS\1-POS-3MIN.M
 Analysis Method : D:\CHEM32\1\METHODS\1-POS-3MIN-PROSRSS.M
 Catalog No : HY-12137 Batch#12094 Easy-Access Method: '1-POS-3MIN' 618.80
 Method Info : Mobile Phase: A: water(0.01%TFA) B:ACN(0.01%TFA)
 Gradient: 5% to 95%B within 1.3 min
 Flow Rate :1.8ml/min
 Column :SunFire C18, 4.6*50mm,3.5um A-RP-186
 Oven Temperature : 45C



Integration Results for DAD1 B, Sig=214,4 Ref=off

RetTim	Width	Area	Height	Area%	MS (+)
1.09	0.02	42.58	36.37	2.12	387
1.19	0.03	1934.44	1140.89	96.38	310
1.92	0.02	30.12	0.14	1.50	233

Integration Results for DAD1 C, Sig=254,4 Ref=off

RetTim	Width	Area	Height	Area%	MS (+)
1.09	0.02	9.58	8.56	0.96	387
1.19	0.03	988.06	600.55	98.76	310
1.35	0.02	1.61	1.18	0.16	310
1.38	0.02	1.24	0.99	0.12	620

Ret. Time: 1.17

<<<< POSITIVE SPECTRA >>>>

