

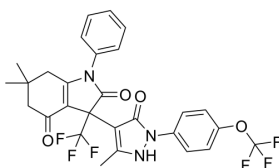
ELOVL6-IN-2

Cat. No.: HY-12146
 CAS No.: 1067647-43-1
 Batch No.: 158971
 Chemical Name: 1H-Indole-2,4-dione, 3-[2,5-dihydro-3-methyl-5-oxo-1-[4-(trifluoromethoxy)phenyl]-1H-pyrazol-4-yl]-3,5,6,7-tetrahydro-6,6-dimethyl-1-phenyl-3-(trifluoromethyl)-

PHYSICAL AND CHEMICAL PROPERTIES

Molecular Formula: $C_{28}H_{23}F_6N_3O_4$
 Molecular Weight: 579.49
 Storage: Powder -20°C 3 years
 In solvent -80°C 2 years
 -20°C 1 year

Chemical Structure:



ANALYTICAL DATA

Appearance: White to off-white (Solid)
 1H NMR Spectrum: Consistent with structure
 LCMS: Consistent with structure
 Purity (LCMS): 99.91%
 Conclusion: The product has been tested and complies with the given specifications.

Caution: Product has not been fully validated for medical applications. For research use only.

Tel: 609-228-6898

Fax: 609-228-5909

E-mail: tech@MedChemExpress.com

Address: 1 Deer Park Dr, Suite Q, Monmouth Junction, NJ 08852, USA