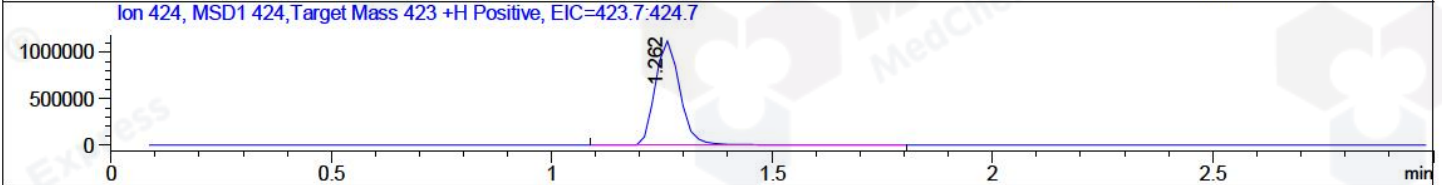
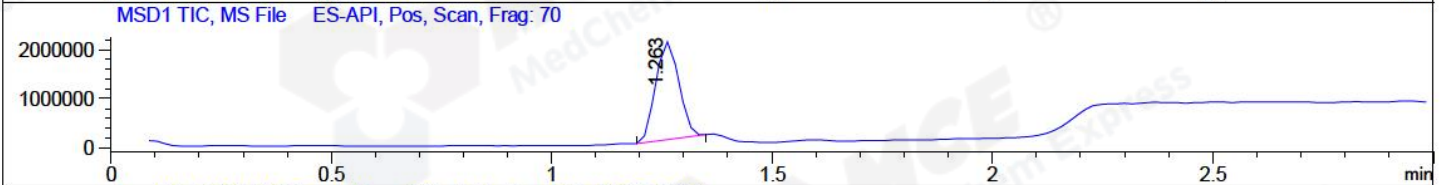
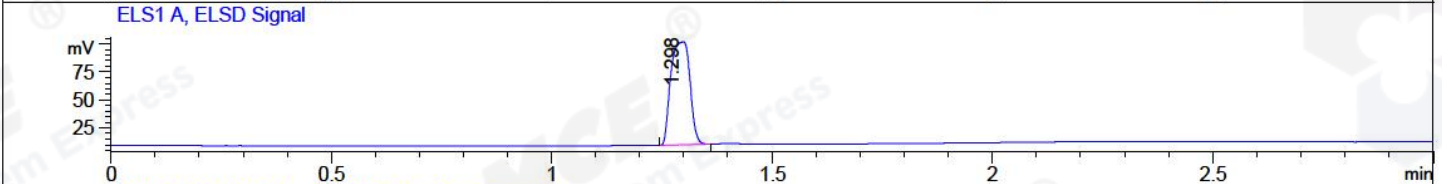
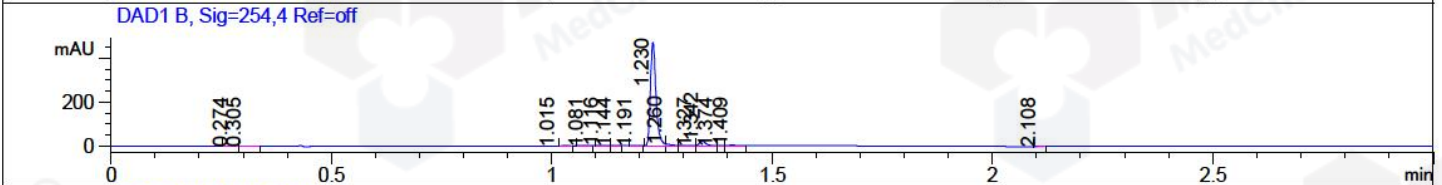
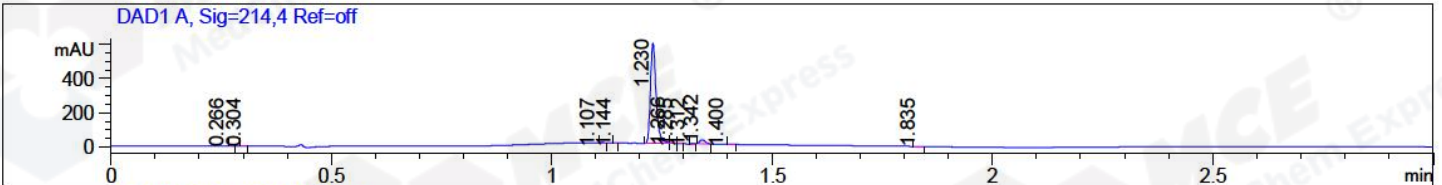


File ..Data\20171030\20171030 1\BIZ2017-030-WYQ8.D Tgt Mass (CHM):  
 Injection Date : 30 Oct 17 12:10 pm +0800 Seq. Line : 42  
 Sample Name : BIZ2017-030-WYQ8 Location : P1-D-05  
 Acq. Operator : SYSTEM Inj : 1  
 Spec. Reported : MS Integration Inj Volume : 1 ul  
 Acq. Method : D:\LCMS03\Data\20171030\20171030 1\1-POS-3MIN.M  
 Analysis Method : D:\LCMS03\Data\20171030\20171030 1\1-POS-3MIN.M  
 Catalog No : HY-12170 Batch#26916  
 Method Info : Mobile Phase: A: water(0.01%TFA) B:ACN(0.01%TFA)  
 Gradient: 5% to 95%B within 1.3 min  
 Flow Rate :1.8ml/min  
 Column :SunFire C18, 4.6\*50mm,3.5um A-RP-186  
 Oven Temperature : 45C



Integration Results for DAD1 A, Sig=214,4 Ref=off

RetTim	Width	Area	Height	Area%	MS (+)
0.27	0.01	0.21	-0.08	0.04	ND
0.30	0.01	0.05	0.10	0.01	ND
1.11	0.01	1.14	0.12	0.21	ND
1.14	0.01	0.21	0.44	0.04	440
1.23	0.01	522.57	587.73	95.03	424
1.27	0.01	3.50	7.12	0.64	424
1.28	0.01	0.68	1.17	0.12	424
1.31	0.01	0.23	0.08	0.04	424
1.34	0.01	19.38	23.79	3.52	409
1.40	0.01	1.50	0.20	0.27	409
1.84	0.02	0.41	0.43	0.08	233

Integration Results for DAD1 B, Sig=254,4 Ref=off

RetTim	Width	Area	Height	Area%	MS (+)
0.27	0.01	0.25	0.27	0.05	ND
0.30	0.01	0.54	0.57	0.12	ND
1.02	0.02	0.26	0.01	0.06	ND

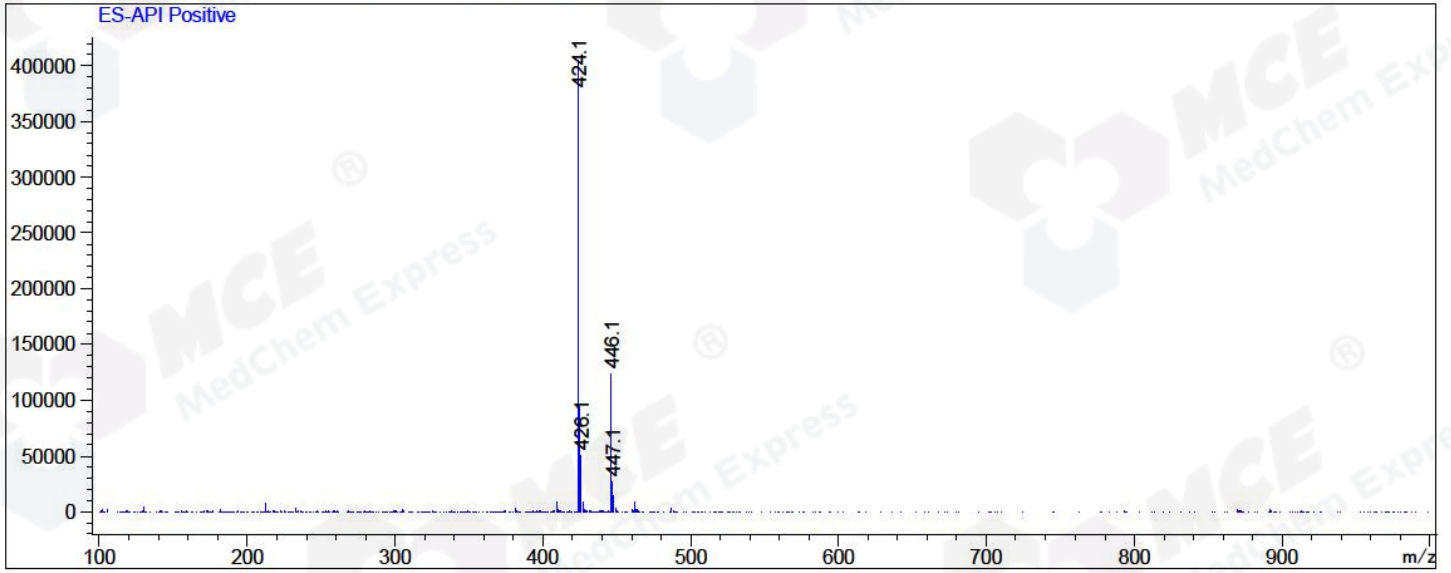
1.08	0.01	0.05	0.06	0.01	439
1.12	0.01	1.75	2.15	0.39	ND
1.14	0.01	0.43	0.58	0.09	440
1.19	0.01	0.20	0.22	0.04	424
1.23	0.01	412.44	467.59	91.65	424
1.26	0.01	5.67	8.09	1.26	424
1.33	0.02	2.15	1.68	0.48	424
1.34	0.02	22.91	24.36	5.09	409
1.37	0.01	0.11	0.22	0.02	409
1.41	0.01	2.99	3.42	0.66	409
2.11	0.01	0.28	0.32	0.06	105

## Integration Results for MSD1 TIC, MS File

RetTim	Width	Area	Height	Area%	MS (+)
1.26	0.06	7299663.00	1990192.13	100.00	424

Ret. Time: 1.26

<<<< POSITIVE SPECTRA >>>>



\*\*\* End of Report \*\*\*