

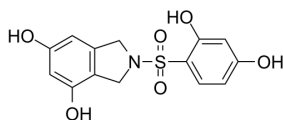
## PS10

Cat. No.: HY-121744  
CAS No.: 1564265-82-2  
Batch No.: 67000  
Chemical Name: 1H-Isoindole-4,6-diol, 2-[(2,4-dihydroxyphenyl)sulfonyl]-2,3-dihydro-

### PHYSICAL AND CHEMICAL PROPERTIES

Molecular Formula: C<sub>14</sub>H<sub>13</sub>NO<sub>6</sub>S  
Molecular Weight: 323.32  
Storage: Powder      -20°C    3 years  
                                  4°C      2 years  
                                  In solvent   -80°C    6 months  
                                  -20°C    1 month

### Chemical Structure:



### ANALYTICAL DATA

Appearance: Light yellow to khaki (Solid)  
<sup>1</sup>H NMR Spectrum: Consistent with structure  
LCMS: Consistent with structure  
Purity (LCMS): 99.26%  
Conclusion: The product has been tested and complies with the given specifications.

**Caution: Product has not been fully validated for medical applications. For research use only.**

Tel: 609-228-6898

Fax: 609-228-5909

E-mail: [tech@MedChemExpress.com](mailto:tech@MedChemExpress.com)

Address: 1 Deer Park Dr, Suite Q, Monmouth Junction, NJ 08852, USA