

File ..1\DATA\2019\20190620\597\BIZ2019-619-CXL4.D Tgt Mass (CHM):

Injection Date : 20 Jun 19 3:31 pm +0800 Seq. Line : 80

Sample Name : BIZ2019-619-CXL4 Location : PL-A-04

Acq. Operator : ZJ\_1432 Inj : 1

Spec. Reported : MS Integration Inj Volume : 1 ul

Acq. Method : D:\Chem32\1\data\2019\20190620\597\1-POS-3MIN.M

Analysis Method : D:\CHEM32\1\DATA\2019\20190620\597\1-POS-3MIN.M

Catalog No : HY-121832 Batch#43036

Method Info : Mobile Phase: A: water(0.01%TFA) B:ACN(0.01%TFA)

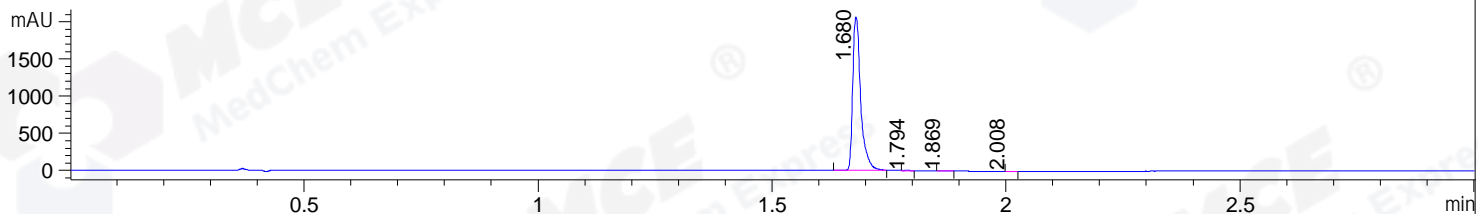
Gradient: 5% to 95%B within 1.3 min

Flow Rate :1.8ml/min

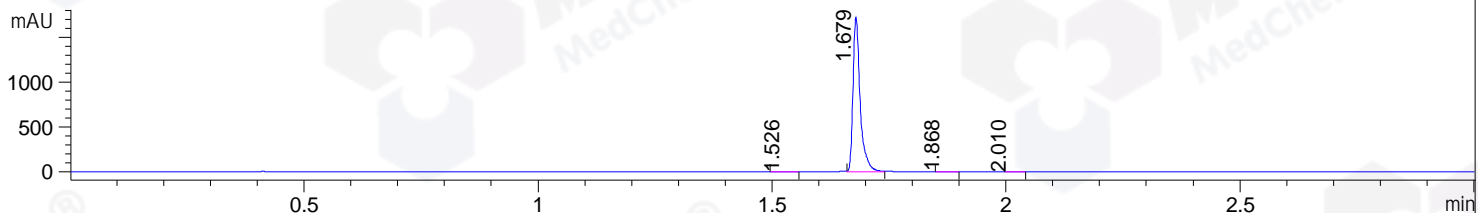
Column :SunFire C18, 4.6\*50mm,3.5um A-RP-433

Oven Temperature : 45

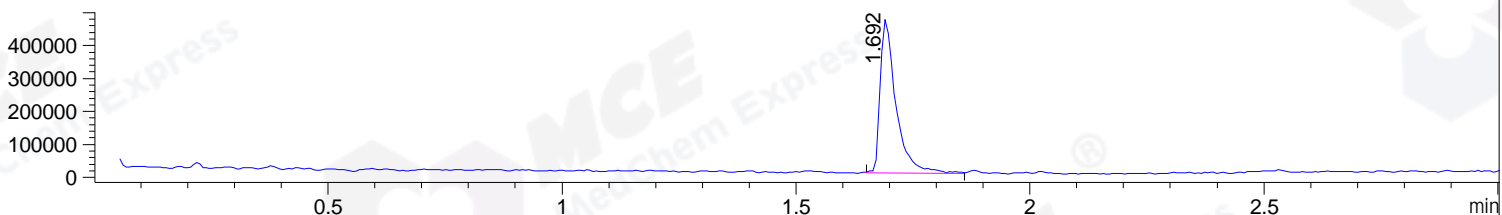
DAD1 B, Sig=214,4 Ref=off



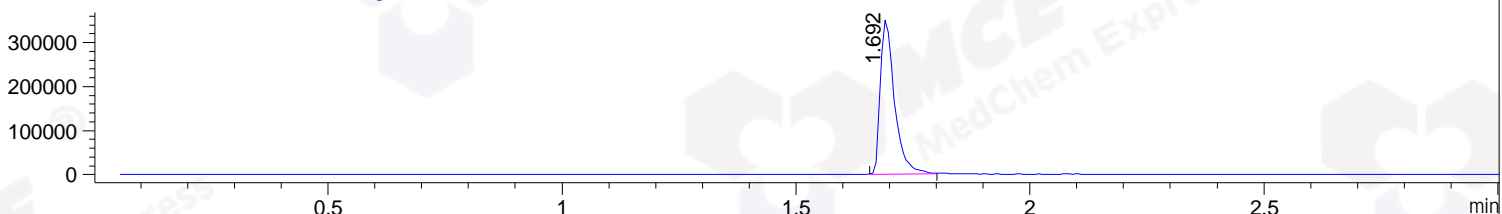
DAD1 C, Sig=254,4 Ref=off



MSD1 TIC, MS File ES-API, Pos, Scan, Frag: 70



Ion 308.14, MSD1 308.14, Target Mass 307.14 +H Positive, EIC=307.84:308.84



Integration Results for DAD1 B, Sig=214,4 Ref=off

| RetTim | Width | Area    | Height  | Area% | MS (+) |
|--------|-------|---------|---------|-------|--------|
| 1.68   | 0.02  | 2458.90 | 2067.21 | 99.80 | 308    |
| 1.79   | 0.01  | 1.40    | 1.57    | 0.06  | 308    |
| 1.87   | 0.01  | 1.65    | 1.91    | 0.07  | 157    |
| 2.01   | 0.01  | 1.89    | 2.32    | 0.08  | 157    |

Integration Results for DAD1 C, Sig=254,4 Ref=off

| RetTim | Width | Area    | Height  | Area% | MS (+) |
|--------|-------|---------|---------|-------|--------|
| 1.53   | 0.03  | 3.71    | 2.16    | 0.20  | 157    |
| 1.68   | 0.02  | 1836.03 | 1723.84 | 99.50 | 308    |
| 1.87   | 0.02  | 3.07    | 3.00    | 0.17  | 157    |
| 2.01   | 0.02  | 2.43    | 2.42    | 0.13  | 157    |

Integration Results for MSD1 TIC, MS File

| RetTim | Width | Area       | Height    | Area%  | MS (+) |
|--------|-------|------------|-----------|--------|--------|
| 1.69   | 0.04  | 1094748.88 | 468307.00 | 100.00 | 308    |

Ret. Time: 1.69

<<<< POSITIVE SPECTRA >>>>

ES-API Positive

