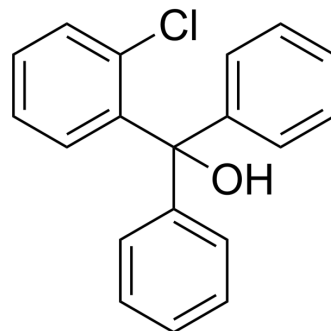


## (2-Chlorophenyl)diphenylmethanol

Cat. No.:	HY-121914
CAS No.:	66774-02-5
Molecular Formula:	C <sub>19</sub> H <sub>15</sub> ClO
Molecular Weight:	294.77
Target:	Calcium Channel
Pathway:	Membrane Transporter/Ion Channel; Neuronal Signaling
Storage:	Please store the product under the recommended conditions in the Certificate of Analysis.



### BIOLOGICAL ACTIVITY

#### Description

(2-Chlorophenyl)diphenylmethanol (UCL 1880) is an analog of the metabolite 2-chlorophen-diphenyl-methanol (CBM) of 2-chlorophenyl, The IC<sub>50</sub> for sl(AHP) inhibition is 1-2 μM. (2-chlorophenyl)diphenylmethanol is a weak Ca<sup>2+</sup> channel blocker<sup>[1]</sup>.

### REFERENCES

[1]. Shah MM, et al. Clotrimazole analogues: effective blockers of the slow afterhyperpolarization in cultured rat hippocampal pyramidal neurones. Br J Pharmacol. 2001 Feb;132(4):889-98.

**Caution: Product has not been fully validated for medical applications. For research use only.**

Tel: 609-228-6898

Fax: 609-228-5909

E-mail: tech@MedChemExpress.com

Address: 1 Deer Park Dr, Suite Q, Monmouth Junction, NJ 08852, USA