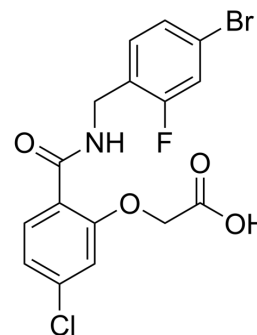


IDD388

Cat. No.:	HY-121933
CAS No.:	314297-26-2
Molecular Formula:	C ₁₆ H ₁₂ BrClFNO ₄
Molecular Weight:	416.63
Target:	Aldose Reductase
Pathway:	Metabolic Enzyme/Protease
Storage:	Please store the product under the recommended conditions in the Certificate of Analysis.



BIOLOGICAL ACTIVITY

Description	IDD388 is a selective aldose reductase (ALR2) inhibitor with an IC ₅₀ of 30 nM. IDD388 displays selectivity for ALR2 over ALR1 (IC ₅₀ of 14 μM) ^[1] .
IC ₅₀ & Target	IC ₅₀ : 30 nM (ALR2) ^[1]

REFERENCES

[1]. Holger Steuber, et al. Merging the binding sites of aldose and aldehyde reductase for detection of inhibitor selectivity-determining features. J Mol Biol. 2008 Jun 20;379(5):991-1016.

Caution: Product has not been fully validated for medical applications. For research use only.

Tel: 609-228-6898

Fax: 609-228-5909

E-mail: tech@MedChemExpress.com

Address: 1 Deer Park Dr, Suite Q, Monmouth Junction, NJ 08852, USA