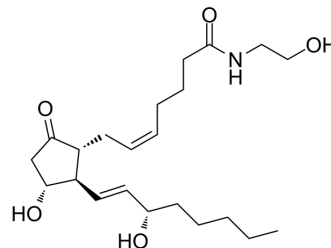


Prostaglandin E2 Ethanolamide

Cat. No.:	HY-121996
CAS No.:	194935-38-1
Molecular Formula:	C ₂₂ H ₃₇ NO ₅
Molecular Weight:	395.53
Target:	Prostaglandin Receptor; COX
Pathway:	GPCR/G Protein; Immunology/Inflammation
Storage:	Please store the product under the recommended conditions in the Certificate of Analysis.



BIOLOGICAL ACTIVITY

Description

Prostaglandin E2 Ethanolamide (PGE₂-EA), an analog of PGE₂, can be formed enzymatically following COX-2 oxygenation of endocannabinoids. Prostaglandin E2 Ethanolamide (PGE₂-EA) could modulate the production of the proinflammatory cytokine TNF- α in human blood and human monocytic cells^{[1][2]}.

REFERENCES

- [1]. Kevin R Kozak, et al. Metabolism of the endocannabinoids, 2-arachidonylglycerol and anandamide, into prostaglandin, thromboxane, and prostacyclin glycerol esters and ethanolamides. *J Biol Chem.* 2002 Nov 22;277(47):44877-85.
- [2]. Kirsten L Brown, et al. Characterisation of the prostaglandin E2-ethanolamide suppression of tumour necrosis factor- α production in human monocytic cells. *Biochim Biophys Acta.* 2013 Jun;1831(6):1098-107.

Caution: Product has not been fully validated for medical applications. For research use only.

Tel: 609-228-6898

Fax: 609-228-5909

E-mail: tech@MedChemExpress.com

Address: 1 Deer Park Dr, Suite Q, Monmouth Junction, NJ 08852, USA